



Artex

AUGUST THOMSEN CORP
since 1905



From time to time I am asked about the origin of the Ateco brand name (*pronounced Ateeko*). My great grandfather and company founder, August Thomsen, extracted the letter A from August, the T from Thomsen and the CO from Company with an E added for sound and style.

Our Ateco brand of cake decorating and baking tools are constantly being evaluated and reviewed for ways we can improve our products. Decorating tubes are now only available in stainless steel, making them stronger, more precise and more hygienic. Clear disposable bags are now more pliable and easier to grip. Sculpturing tools now have reinforced steel wire to make them more rigid. Our goal is to offer the finest tools available to the professional cake decorator.

New Items such as fondant and fondant tools are constantly being added to accommodate the ever changing needs of the consumer.

More of our items come in trilingual packaging, providing added appeal, ease of merchandising, and explanation of the product and its uses, and in some cases a reusable storage container to add value.

Ateco items are produced in our modest factory in Glen Cove, New York as well as similar factories in seven countries around the world. All items are clearly marked with the country of origin. I commend our employees and the factories we work with, for sharing my passion for the brand, and its reputation for quality, that spans **over 100 years** and four generations.

Most of all I am grateful to you our customer for your appreciation and loyalty to the Ateco brand.

Truly,
Douglas Schneider



SUPERFLEX DECORATING BAGS

Pliable, strong and stain resistant, easy to grip and easy to clean.
Great for both hot and cold foods. Microwave safe.
Made of food grade TPM. It's flexible like silicone, but doesn't balloon like silicone.
Made in China.

No.	UPC	Length	Pack	Ctn. Wt.	Cu. Ft.	Master
3730	0 14963 03730 0	11.8"	12	0.4 Lbs.	.050	600
3734	0 14963 03734 8	13.4"	12	0.6 Lbs.	.050	600
3738	0 14963 03738 6	15"	12	0.8 Lbs.	.065	480
3746	0 14963 03746 1	18.1"	12	1.0 Lbs.	.073	480
3750	0 14963 03750 8	19.7"	12	1.1 Lbs.	.073	300
3755	0 14963 03755 3	21.6"	12	1.4 Lbs.	.110	360
3760	0 14963 03760 7	23.6"	12	1.6 Lbs.	.110	300
3765	0 14963 03765 2	25.6"	12	1.8 Lbs.	.110	240
3770	0 14963 03770 6	27.5"	12	2.0 Lbs.	.110	240



DISPOSABLE BAGS ON A ROLL

Soft and pliable polyethylene is easy to use.
Perforated to make equal sided triangles.
100 bags per roll.
Made of .003" LDPE.
Made in China.

No.	UPC	Length	Pack	Ctn. Wt.	Cu. Ft.
4712	0 14963 04712 5	12"	10	9.6 Lbs.	.466
4718	0 14963 04718 7	18"	10	18.0 Lbs.	.67
4721	0 14963 04721 7	21"	10	24.1 Lbs.	.91



NON STICK ROLLING PIN

No. 7512 / UPC 0 14963 07512 8
Comes with 2 sets of bands to control fondant thickness (.062" & .125").
Made of food grade plastic.
Made in China.

Barrel	Diameter	Length	Pack	Ctn. Wt.	Cu. Ft.
1"		8.75"	6	1.9 Lbs.	.1



FONDANT CUTTER/EMBOSSER

No. 1330 / UPC 0 14963 01330 4
Use to cut and emboss fondant.
Comes with 3 interchangeable wheels and wheel storage compartment.
Made of plastic.
Made in China.

Pack	Ctn. Wt.	Cu. Ft.
12	.9 Lbs.	.08



FONDANT SMOOTHER

No. 1301 / UPC 0 14963 01301 4
Use to smooth imperfections from the surface of rolled fondant.
Made of plastic.
Made in China.

Pack	Ctn. Wt.	Cu. Ft.
12	1.9 Lbs.	.17

GRADUATED CUTTER SETS

Strong, sturdy, and sharp enough to cut dough and sugar paste.
Plastic material does not stick to dough like traditional metal cutters.
Made of Polycarbonate.
Made in China.

9 PIECE PLAIN ROUND CUTTER SET

No. 5757 / UPC 0 14963 05757 5

Cutters range from .9" to 4.1".

Pack	Ctn. Wt.	Cu. Ft.	Master
4	2.3 Lbs.	.11	48



9 PIECE PLAIN SQUARE CUTTER SET

No. 5753 / UPC 0 14963 05753 7

Cutters range from .8" to 4".

Pack	Ctn. Wt.	Cu. Ft.	Master
4	2.6 Lbs.	.8	48



7 PIECE PLAIN OVAL CUTTER SET

No. 5754 / UPC 0 14963 05754 4

Cutters range from 1.3" to 4.4".

Pack	Ctn. Wt.	Cu. Ft.	Master
4	1.9 Lbs.	.1	48



7 PIECE PLAIN FOOTBALL CUTTER SET

No. 5755 / UPC 0 14963 05755 1

Cutters range from .7" to 4.4".

Pack	Ctn. Wt.	Cu. Ft.	Master
4	1.6 Lbs.	.08	48



7 PIECE PLAIN HEART CUTTER SET

No. 5751 / UPC 0 14963 05751 3

Cutters range from 1" to 4.75".

Pack	Ctn. Wt.	Cu. Ft.	Master
4	2.5 Lbs.	.14	48





9 PIECE FLUTED ROUND CUTTER SET

No. 5707 / UPC 0 14963 05707 0

Cutters range from .9" to 4.1".

Pack	Ctn. Wt.	Cu. Ft.	Master
4	2.2 Lbs.	.12	48



9 PIECE FLUTED SQUARE CUTTER SET

No. 5703 / UPC 0 14963 05703 2

Cutters range from .9" to 3.9".

Pack	Ctn. Wt.	Cu. Ft.	Master
4	2.7 Lbs.	.14	48



7 PIECE FLUTED OVAL CUTTER SET

No. 5704 / UPC 0 14963 05704 9

Cutters range from 1.2" to 4.3".

Pack	Ctn. Wt.	Cu. Ft.	Master
4	2 Lbs.	.1	48



7 PIECE FLUTED FOOTBALL CUTTER SET

No. 5705 / UPC 0 14963 05705 6

Cutters range from .8" to 4.4".

Pack	Ctn. Wt.	Cu. Ft.	Master
4	1.6 Lbs.	.09	48



7 PIECE FLUTED HEART CUTTER SET

No. 5701 / UPC 0 14963 05701 8

Cutters range from .6" to 4.2".

Pack	Ctn. Wt.	Cu. Ft.	Master
4	2.3 Lbs.	.14	48



8 PIECE FLUTED TEARDROP CUTTER SET

No. 5702 / UPC 0 14963 05702 5

Cutters range from .75" to 4.75".

Pack	Ctn. Wt.	Cu. Ft.	Master
4	1.9 Lbs.	.13	48



5 PIECE PLAIN STAR CUTTER SET

No. 5750 / UPC 0 14963 05750 6

Cutters range from .8" to 5.5".

Pack	Ctn. Wt.	Cu. Ft.	Master
4	2.1 Lbs.	.14	48



7 PIECE PLAIN CRESCENT CUTTER SET

No. 5756 / UPC 0 14963 05756 8

Cutters range from 2.9" to 4".

Pack	Ctn. Wt.	Cu. Ft.	Master
4	2.6 Lbs.	.14	48



7 PIECE PLAIN FAN CUTTER SET

No. 5758 / UPC 0 14963 05758 2

Cutters range from 1.2" to 5".

Pack	Ctn. Wt.	Cu. Ft.	Master
4	1.9 Lbs.	.125	48



8 PIECE PLAIN FLOWER CUTTER SET

No. 5759 / UPC 0 14963 05759 9

Cutters range from .7" to 4.5".

Pack	Ctn. Wt.	Cu. Ft.	Master
4	2.5 Lbs.	.14	48





8 PIECE PLAIN CLOVER CUTTER SET

No. 5760 / UPC 0 14963 05760 5

Cutters range from .75" to 4.25".

Made in China.

Pack	Ctn. Wt.	Cu. Ft.	Master
4	2.3 Lbs.	.14	48



ALPHABET CUTTER SET

No. 5770 / UPC 0 14963 05770 4

Use to cut cookies, petit fours and finger sandwiches.

Non stick plastic material works great with rolled fondant and sugar paste.

Precise detail and sharp cutting edge.

Each letter measures approximately 1.5".

Made of polypropylene.

Made in China.

Pack	Ctn. Wt.	Cu. Ft.
12	5 Lbs.	.76



STANDARD CUTTERS

Transparent plastic allows you to see where you are cutting.

Made of ABS plastic.

Made in China.

3 DAISY CUTTERS

No. 1966 / UPC 0 14963 01966 5

Sizes .75", 1.5" and 2.5".

Pack	Ctn. Wt.	Cu. Ft.
12	1.1 Lbs.	.17



3 CARNATION CUTTERS

No. 1967 / UPC 0 14963 01967 2

Sizes: 1", 1.4" and 1.7".

Pack	Ctn. Wt.	Cu. Ft.
12	1.1 Lbs.	.17



3 BEAR CUTTERS

No. 1968 / UPC 0 14963 01968 9

Sizes 1", 1.75" and 3".

Pack	Ctn. Wt.	Cu. Ft.
12	1.25 Lbs.	.25

PLUNGER STYLE CUTTERS

Cut, emboss and eject sugar paste decorations with one cutter.
New transparent plastic allows you to see where you are cutting.
Made of ABS plastic.
Made in China.

3 LAURUSTINUS CUTTERS

No. 1959 / UPC 0 14963 01959 7

Sizes: 1.25", 1.5" and 2".

Pack	Ctn. Wt.	Cu. Ft.
12	1.7 Lbs.	.56



3 SNOWFLAKE CUTTERS

No. 1961 / UPC 0 14963 01961 0

Sizes: 1", 1.5" and 2.25".

Pack	Ctn. Wt.	Cu. Ft.
12	2.1 Lbs.	.66



2 VEINED LILY CUTTERS

No. 1962 / UPC 0 14963 01962 7

Each size 2.5"

Pack	Ctn. Wt.	Cu. Ft.
12	1.7 Lbs.	.56



3 LEAF CUTTERS

No. 1963 / UPC 0 14963 01963 4

Sizes: 1", 1.25" and 1.75".

Pack	Ctn. Wt.	Cu. Ft.
12	1.1 Lbs.	.46



3 BUTTERFLY CUTTERS

No. 1965 / UPC 0 14963 01965 8

Sizes: 1.25", 1.75" and 2.5".

Pack	Ctn. Wt.	Cu. Ft.
12	2.1 Lbs.	.66





4 FLOWER CUTTERS

No. 1942 / UPC 0 14963 01942 9

Extra long design in order to make multi cuts with one ejection.

Sizes: .25", .375", .5" and .65".

Made of stainless steel / aluminum plunger mechanism.

Made in China.

Pack	Ctn. Wt.	Cu. Ft.
12	1.5 Lbs.	.06



4 HEART CUTTERS

No. 1943 / UPC 0 14963 01943 6

Extra long design in order to make multi cuts with one ejection.

Sizes: .25", .375", .5" and .65".

Made of stainless steel / aluminum plunger mechanism.

Made in China.

Pack	Ctn. Wt.	Cu. Ft.
12	1.5 Lbs.	.06



3 PLAQUE CUTTERS

No. 5265 / UPC 0 14963 05265 5

Sizes: 1.4", 2.2" and 2.9".

Made of stainless steel.

Made in Indonesia.

Pack	Ctn. Wt.	Cu. Ft.
12	2.5 Lbs	.13



3 BUTTERFLY CUTTERS

No. 5264 / UPC 0 14963 05264 8

Sizes: 2", 3.25" and 4.25"

Made of stainless steel.

Made in Indonesia.

Pack	Ctn. Wt.	Cu. Ft.
12	2.5 Lbs.	.20



5.5" FISH MOLD/CUTTER

No. 4960 / UPC 0 14963 04960 0

Mold food or cut dough.

Made of stainless steel.

Made in Indonesia.

Pack	Ctn. Wt.	Cu. Ft.
12	4.4 Lbs.	.22



4" DAHLIA FLOWER CUTTER

No. 2012 / UPC 0 14963 02012 8

Made of stainless steel.

Made in Indonesia.

Pack	Ctn. Wt.	Cu. Ft.
12	1.2 Lbs.	.125



4" FLOWER CUTTER

No. 2013 / UPC 0 14963 02013 5

Made of stainless steel.

Made in Indonesia.

Pack	Ctn. Wt.	Cu. Ft.
12	1.1 Lbs.	.125



5" OVAL CUTTER

No. 5153 / UPC 0 14963 05153 5

Cuts four ovals at a time. Minimizes waste.

Great for cutting éclairs or bread dough.

Each cut measures: 5" x 1.5"

Made of stainless steel.

Made in China.

Pack	Ctn. Wt.	Cu. Ft.
12	6.8 Lbs.	.43



BASKET DIPPING TOOL

No. 1373 / UPC 0 14963 01373 1

Ideal for dipping nuts and berries in chocolate.

Can be used for dipping a wide range of items.

Size: 2.5" x 1" x .75" deep.

Made of stainless steel.

Made in China.

Pack	Ctn. Wt.	Cu. Ft.
24	2.0 Lbs.	.14



LARGE SPIRAL DIPPING TOOL

No. 1374 / UPC 0 14963 01374 8

Ideal for dipping strawberries or spheres.

Size: 1.5" diameter.

Made of stainless steel.

Made in China.

Pack	Ctn. Wt.	Cu. Ft.
24	1.7 Lbs.	.11





9.5" FAN SHAPED BOWL SCRAPER

No. 1321 / UPC 0 14963 01321 2

Pliable material easily conforms to different bowl sizes and shapes.

Size: 9.5" x 5.4" x 2.5".

Made of polyethylene.

Made in Korea.

Pack	Ctn. Wt.	Cu. Ft.
12	.9 Lbs.	.04



2 ICING SPREADERS

No. 1325 / UPC 0 14963 01325 0

Use to stencil decorations on cakes.

Tapered design provides flexibility at tip.

Size: 3.5" x 1.5".

Made of polyethylene.

Made in Korea.

Pack	Ctn. Wt.	Cu. Ft.
12	.3 Lbs.	.02



15 PIECE MINI SCULPTURING TOOL SET

No. 4203 / UPC 0 14963 04203 8

Use to form, shape, mark and imprint sugar paste flowers, leaves, figures and other decorations.

Made of plastic.

Made in China.

Pack	Ctn. Wt.	Cu. Ft.
12	1.3 Lbs.	.09



CAKE KNIFE

No. 1336 / UPC 0 14963 01336 6

Blade designed specifically to cut sponge cake and other delicate cakes cleanly.

Size: 5.75" Cutting edge

Blade: stainless steel.

Handle: POM (Polyoxymethylene Thermoplastic)

Individually boxed.

Made in China.

Pack	Ctn. Wt.	Cu. Ft.
12	5 Lbs.	.32



CAKE KNIFE

No. 1337 / UPC 0 14963 01337 3

Blade designed specifically to cut sponge cake and other delicate cakes cleanly.

Size: 10" Cutting edge

Blade: stainless steel.

Handle: POM (Polyoxymethylene Thermoplastic)

Individually boxed.

Made in China.

Pack	Ctn. Wt.	Cu. Ft.
12	7.5 Lbs.	.42



REVOLVING CAKE STAND

No. 608 / UPC 0 14963 00608 5

Use to decorate cakes. Stainless steel ball bearings make for smooth rotation.

11" diameter top. Height 3".

Made of food grade plastic.

Made in China.

Pack	Ctn. Wt.	Cu. Ft.
8	7.4 Lbs.	1.7



4 PACK OF METALIC AIRBRUSH FOOD COLOR

No. 1104 / UPC 0 14963 01104 1

One each of the following .65oz certified airbrush colors: pearl, copper, silver and gold.

Made in USA.

Pack	Ctn. Wt.	Cu. Ft.
12	2.5 Lbs.	.08



OFFSET SPATULA WITH NON-SLIP TEXTURED HANDLE

No. 1362 / UPC 0 14963 01362 5

Ideal for fine detail work like fondant.

Blade size: 1.4" x .4".

Made of stainless steel blade and plastic handle.

Made in Italy.

Pack	Ctn. Wt.	Cu. Ft.	Master
12	.95 Lbs.	.14	276



6 PIECE DOUBLE SIDED TRIANGLE CUTTER SET

No. 52560 / 0 14963 52560 9

Each cutter has a plain and fluted side.

Cutters range from 1.75" to 4.75" in length.

Made of stainless steel.

Made in China.

Pack	Ctn. Wt.	Cu.Ft.	Master
12	6.2 Lbs.	.35	48



6 PIECE DECORATING SET

No. 784 / UPC 0 14963 00784 6

Use to decorate cakes, pies and pastries.

Great for cupcakes too.

Set contains the following polycarbonate tubes: 9907 & 9913 closed star, 9813 plain,

9897 basket weave, 9352 leaf and 13.5" pre-cut superflex (silicone) decorating bag.

Tubes made in Korea.

Decorating bag made in China.

Assembled in USA.

Pack	Ctn. Wt.	Cu. Ft.	Master
6	3.2 Lbs.	.23	72





MULTI-WHEEL CUTTER HOSTING ROD 27.5"/70CM

No. 13940 / UPC 0 14963 13940 0

Features inch/centimeter wheel setting guide. Accepts all Ateco plain and fluted wheels.
Made of stainless steel.

Made in Taiwan.

Pack	Ctn. Wt.	Cu. Ft.
20	26	.28



4 PACK 2.2"/5.5CM CUTTING WHEELS WITH LOCKING HARDWARE

No. 13942 / UPC 0 14963 13942 4

Use with multi-wheel hosting rod.

Made of stainless steel.

Made in Taiwan.

Pack	Ctn. Wt.	Cu. Ft.
20	22	.62



4 PACK 2.2"/5.5CM FLUTED CUTTING WHEELS WITH LOCKING HARDWARE

No. 13944 / UPC 0 14963 13944 8

Use with multi-wheel hosting rod.

Made of stainless steel.

Made in Taiwan.

Pack	Ctn. Wt.	Cu. Ft.
20	19.4	.65



4 PACK 3.9"/10CM CUTTING WHEELS WITH LOCKING HARDWARE

No. 13946/UPC 0 14963 13946 2

Use with multi-wheel hosting rod.

Made of stainless steel.

Made in Taiwan.

Pack	Ctn. Wt.	Cu. Ft.
20	39.7	1.3



TWO COLOR DECORATING BAG INSERTS

No. 4719 / UPC 0 14963 04719 4

Turn any ordinary bag into a two color striped bag using these insert bags.

Each dispenser box contains 50 18" bags.

Made of polyethylene.

Made in China.

Pack	Ctn. Wt.	Cu. Ft.
10	19.8 Lbs.	.73

4" STRAIGHT SPATULA

No. 1334 / UPC 014963 01334 2
Polyoxymethylene thermoplastic handle.
Taper ground stainless steel blade.
Stainless steel rivets.
Blade dimensions: 4" x .75".
Made in China.

Pack	Ctn. Wt.	Cu. Ft.
12	1.6 Lbs.	.1



4.5" OFFSET SPATULA

No. 1335 / UPC 0 14963 01335 9
Polyoxymethylene thermoplastic handle.
Taper ground stainless steel blade.
Stainless steel rivets.
Blade dimensions: 4.5" x .75".
Made in China.

Pack	Ctn. Wt.	Cu. Ft.
12	1.7 Lbs.	.1



6" STRAIGHT SPATULA

No. 1366 / UPC 0 14963 01366 3
Polyoxymethylene thermoplastic handle.
Taper ground stainless steel blade.
Stainless steel rivets.
Blade dimensions: 6" x 1.5".
Made in China.

Pack	Ctn. Wt.	Cu. Ft.
12	2.9 Lbs.	.13



9.75" OFFSET SPATULA

No. 1369 / UPC 0 14963 01369 4
Polyoxymethylene thermoplastic handle.
Taper ground stainless steel blade.
Stainless steel rivets.
Blade dimensions: 9.75" x 1.25".
Made in China.

Pack	Ctn. Wt.	Cu. Ft.
12	3.5 Lbs.	.36



9.75" STRAIGHT SPATULA

No. 1370 / UPC 0 14963 01370 0
Polyoxymethylene thermoplastic handle.
Taper ground stainless steel blade.
Stainless Steel rivets.
Blade dimensions: 9.75" x 1.4".
Made in China.

Pack	Ctn. Wt.	Cu. Ft.
12	3.4 Lbs.	.16





6.5" SLOTTED SPATULA

No. 1364 / UPC 0 14963 01364 9
 Polyoxymethylene thermoplastic handle.
 Taper ground stainless steel blade.
 Stainless steel rivets.
 Blade dimensions: 6.5" x 2.8".
 Made in China.

Pack	Ctn. Wt.	Cu. Ft.
12	2.9 Lbs.	.13



4" OFFSET SPATULA

No. 1367 / UPC 0 14963 01367 0
 Polyoxymethylene thermoplastic handle.
 Taper ground stainless steel blade.
 Stainless steel rivets.
 Blade dimensions: 4" x 2".
 Made in China.

Pack	Ctn. Wt.	Cu. Ft.
12	2.9 Lbs.	.17



6.5" OFFSET SPATULA

No. 1365 / UPC 0 14963 01365 6
 Polyoxymethylene thermoplastic handle.
 Taper ground stainless steel blade.
 Stainless steel rivets.
 Blade dimensions: 6.5" x 2.5".
 Made in China.

Pack	Ctn. Wt.	Cu. Ft.
12	3.4 Lbs.	.21



5.9" BENCH SCRAPER

No. 1371 / UPC 0 14963 01371 7
 Polyoxymethylene thermoplastic handle.
 Stainless steel blade.
 Stainless steel rivets.
 Blade dimensions: 5.9" x 3".
 Made in China.

Pack	Ctn. Wt.	Cu. Ft.
6	3.6 Lbs.	.13



22 PIECE NUMBER & SIGN CUTTER SET

No. 5772 / UPC 0 14963 05772 8
 Use to cut cookies or imprint fondant.
 Each cutter measures approximately 2".
 Made of polypropylene.
 Made in China.

Pack	Ctn. Wt.	Cu. Ft.
12	5.2 Lbs.	.73

ADJUSTABLE ROUND CAKE MOLD

No. 12060 / UPC 0 14963 12060 6

Use to bake or mold. Adjusts from 6.25" to 8.5".

Height: 3.25"

Made of stainless steel.

Made in China.

Pack	Ctn. Wt.	Cu. Ft.
12	13.1 Lbs.	1.4



ADJUSTABLE RECTANGLE CAKE MOLD

No. 12070 / UPC 0 14963 12070 5

Use to bake or mold. Adjusts from 9.25" x 6.5" to 17.25" x 11.75".

Height: 3.25"

Made of stainless steel.

Made in China.

Pack	Ctn. Wt.	Cu. Ft.
12	18.8 Lbs.	2



3 PIECE RUFFLE TOOL SET

No. 4201 / UPC 0 14963 04201 4

Use to ruffle or frill fondant or gum paste.

Made of food grade plastic.

Made in China.

Pack	Ctn. Wt.	Cu. Ft.
12	1.4	.21



3 PIECE NON-STICK SCULPTURING TOOL SET

No. 4205 / UPC 0 14963 04205 2

Great for isomalt and other sticky foods.

Made of TPR plastic.

Made in China.

Pack	Ctn. Wt.	Cu. Ft.
12	1.8 Lbs.	.2



LARGE LINZER CUTTER SET

No. 4841 / UPC 0 14963 04841 2

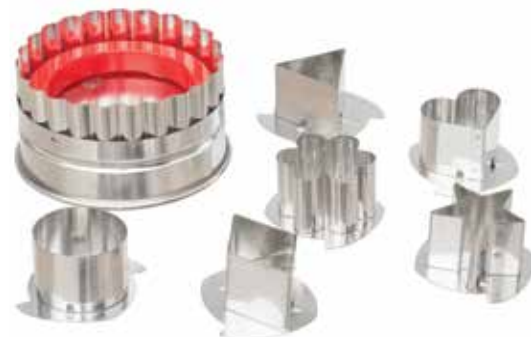
Makes 3.5" linzer tart cookies.

Includes: 6 interchangeable center designs, complete instructions and recipe.

Made of stainless steel.

Made in China.

Pack	Ctn. Wt.	Cu. Ft.
12	6.2	.8







14 PIECE CAKE DECORATING SET

No. 333 / UPC 0 14963 00333 6

Set contains: a 12" flex decorating bag with hem and hanging loop, 12 of our most popular stainless steel decorating tubes, a plastic coupler (pre-attached to bag), instructions and recipes, packaged in a clear plastic storage box.
Made in Korea.

Pack	Ctn Wt.	Cu. Ft.	Master
6	3.3 Lbs.	.23	72



25 PIECE CAKE AND FOOD DECORATING SET

No. 591 / UPC 0 14963 00591 0

Set contains: 10" and 12" decorating bag, 12 decorating tubes, 2 pastry tubes, flower nail, coupler, plastic spatula, decorating comb/smoother, cake tester and 4 food gel colors.
Assembled in USA.

Imported and domestic components.

Pack	Ctn Wt.	Cu. Ft.	Master
6	4.8 Lbs.	.45	48



14 PIECE CAKE DECORATING SET

No. 335 / UPC 0 14963 00335 0

Set contains: 9"x 2" professional cake pan, 12" flex decorating bag, 14" flex decorating bag, 6 decorating tubes, standard coupler, 2 pastry tubes, bowl scraper, and offset spatula in storage tray.

Assembled in USA.

Imported and domestic components.

Pack	Ctn. Wt.	Cu. Ft.
12	12.6 Lbs.	1.66



8 PIECE DECORATING SET

No. 332 / UPC 0 14963 00332 9

Set contains: a standard coupler attached to a 10" plastic coated decorating bag, 6 popular decorating tubes, trilingual instructions and recipes.

Assembled in USA.

Imported and domestic components.

Pack	Ctn. Wt.	Cu. Ft.	Master
12	2.9 Lbs.	.48	108



8 PIECE DECORATING SET

No. 334 / UPC 0 14963 00334 3

Same as 332 with a 10" flex bag instead of a 10" plastic coated decorating bag.

Made in Korea.

Pack	Ctn. Wt.	Cu. Ft.	Master
12	2.8 Lbs.	.49	108

CAKE AND FOOD DECORATING KIT

No. 331 / UPC 0 14963 00331 2

Set contains: 3 plastic decorating tubes (P4, P18, P32) and 15-12" professional quality pre-trimmed disposable decorating bags that are easily accessible through a built in dispenser box.

Made in USA.

Pack	Ctn. Wt.	Cu. Ft.	Master
12	3.8 Lbs.	.46	96



13 PIECE DECORATING SET WITH SYRINGE

No. 556 / UPC 0 14963 00556 9

Set contains: anodized aluminum syringe that holds 3.5 fluid ozs. with plastic spout cap and wing cap, 12 stainless steel standard decorating tubes, multilingual instructions and recipes.

Assembled in USA.

Imported and domestic components.

Pack	Ctn. Wt.	Cu. Ft.	Master
12	5.0 Lbs.	.68	72



7 PIECE DECORATING SET WITH SYRINGE

No. 701 / UPC 0 14963 00701 3

Set contains: anodized aluminum syringe that holds 3.5 fluid ozs. with plastic spout cap and wing cap, 6 stainless steel standard decorating tubes, multilingual instructions and recipes.

Assembled in USA.

Imported and domestic components.

Pack	Ctn. Wt.	Cu. Ft.	Master
12	4.8 Lbs.	.68	48



3 PIECE PASTRY SET

No. 1465 / UPC 0 14963 01465 3

Set contains: a star (824) and plain (806) stainless steel pastry tube, a 12" plastic coated pastry bag, multilingual instructions and recipes. Use to make eclairs, cream puffs, deviled eggs, or for mashed potatoes.

Assembled in USA.

Imported and domestic components.

Pack	Ctn. Wt.	Cu. Ft.	Master
12	2.4 Lbs.	.4	144



8 PIECE CRIMPER TOOL SET

No. 4202 / UPC 0 14963 04202 1

Use to emboss designs in sugar paste icings for decorations.

Made of stainless steel.

Made in Indonesia.

Pack	Ctn Wt.	Cu. Ft.
12	7.4 Lbs.	.29





FONDANT STRIP APPLICATOR

No. 4206 / UPC 0 14963 04206 9

Apply fondant strips to cakes in a straight line.

Apply strips up to 4" wide.

Made of stainless steel and plastic.

Made in China .

Pack	Ctn. Wt.	Cu. Ft.
12	8.5 Lbs.	.37



9 PIECE/18 SHAPE - SCULPTURING TOOL SET

No. 4200 / UPC 0 14963 04200 7

Use to form, shape, mark and imprint sugar paste flowers, leaves, figures, and other decorations. Add detail and bring your sugar paste creations to life.

Instructional booklet included.

Made of plastic.

Made in China.

Pack	Ctn. Wt.	Cu.Ft.	Master
10	3.0 Lbs.	.47	60



5 PIECE/10 SHAPE SCULPTURING TOOL SET

No. 4212 / UPC 0 14963 04212 0

Use to form, shape, mark and imprint sugar paste flowers, leaves, figures and other decorations. Add detail and bring your sugar paste creations to life.

Made of plastic.

Made in China.

Pack	Ctn. Wt.	Cu.Ft.
12	1.4 Lbs.	.07



10 PIECE DIPPING TOOL SET

No. 1377 / UPC 0 14963 01377 9

Use to hold fruit, candy or nuts secure while submerging them in melted chocolate or other coatings. Hold petit four while covering with fondant icing.

Made of stainless steel with polypropylene handle.

Made in Indonesia.

Pack	Ctn. Wt.	Cu. Ft.
12	8 Lbs.	.41



3 PIECE DIPPING TOOL SET

No. 1378 / UPC 0 14963 01378 6

Use to hold fruit, candy or nuts secure while dipping them into melted chocolate or other coatings.

Also used for holding petit fours while pouring fondant icing over them.

Made of stainless steel.

Packaged and assembled in USA.

Made in China.

Pack	Ctn. Wt.	Cu. Ft.	Master
12	2.6 Lbs.	.12	192

29 PIECE DECORATING TUBE SET

No. 782 / UPC 0 14963 00782 2

Set contains: 26 decorating tubes including writing, star, leaf, rose, grass, basketweave, flower tubes and other tubes. Also contains: 2 flower nails, a standard coupler, instructions and a plastic storage box.

Tubes are made of stainless steel.

Assembled in USA.

Korean components, domestic storage box.

Pack	Ctn. Wt.	Cu. Ft.	Master
6	3.8 Lbs.	.26	90



12 PIECE LARGE TUBE SET

No. 786 / UPC 0 14963 00786 0

Set contains: 12 stainless steel pastry tubes including 4 plain (802, 804, 806, 808), 3 star (822, 825, 828), 2 closed star (843, 847), 2 french star (863, 869), 1 cake icer (789) and 1 tube cleaning brush, assembled in a plastic storage box.

Tubes are made of stainless steel.

Assembled in USA

Korean components, domestic storage box.

Pack	Ctn. Wt.	Cu. Ft.	Master
6	4 Lbs.	.53	54



6 PIECE PASTRY TUBE SET

No. 787 / UPC 0 14963 00787 7

Set contains: 2 plain tubes (804, 808), 1 star (827), 1 french star (864), 1 closed star (846), and 1 basket weave tube (898).

Tubes are made of stainless steel.

Assembled in USA

Korean components.

Pack	Ctn Wt.	Cu. Ft.
12	1.95 Lbs.	.05



10 PIECE STAR TUBE SET

No. 830 / UPC 0 14963 00830 0

Set contains: 10 stainless steel star pastry tubes sizes 0-9.

Tubes are made of stainless steel.

Assembled in USA.

Korean components.

Pack	Ctn. Wt.	Cu. Ft.
16	4.4 Lbs.	.27

10 PIECE PLAIN TUBE SET

No. 810 / UPC 0 14963 00810 2

Set contains: 10 stainless steel plain pastry tubes sizes 0-9.

Tubes are made of stainless steel.

Assembled in USA.

Korean components.

Pack	Ctn. Wt.	Cu. Ft.
16	4.4 Lbs.	.27

10 PIECE CLOSED STAR TUBE SET

No. 850 / UPC 0 14963 00850 8

Set contains: 10 stainless steel closed star pastry tubes sizes 0-9.

Tubes are made of stainless steel.

Assembled in USA.

Korean components.

Pack	Ctn. Wt.	Cu. Ft.
16	4.4 Lbs.	.27

10 PIECE FRENCH STAR TUBE SET

No. 870 / UPC 0 14963 00870 6

Set contains: 10 stainless steel french star pastry tubes sizes 0-9.

Tubes are made of stainless steel.

Assembled in USA.

Korean components.

Pack	Ctn. Wt.	Cu. Ft.
16	4.4 Lbs.	.27



PASTRY TUBE PACKAGE ONLY

No. 8800. Use to store tubes. Made in USA.

Pack	Ctn. Wt.	Cu. Ft.
24	.6 Lbs.	.23



55 PIECE DECORATING TUBE SET

No. 783 / UPC 0 14963 00783 9

Set contains: 52 decorating tubes including writing, star, leaf, rose, grass, basketweave, flower tubes and other tubes. Also contains: 2 flower nails, a standard coupler, instructions and a plastic storage box.

Tubes are made of stainless steel.

Assembled in USA.

Korean components, domestic storage box.

Pack	Ctn. Wt.	Cu. Ft.	Master
6	6 Lbs.	.45	48



12 PIECE TUBE SET

No. 788 / UPC 0 14963 00788 4

Set contains: 4 closed star, 4 plain, basket weave, leaf, rose and 'saint honre' tube.

Made of poly carbonate.

Made in Korea.

Pack	Ctn. Wt.	Cu.Ft
6	3.8 Lbs.	.23



4 PIECE WRITING TUBE SET

No. 380 / UPC 0 14963 00380 0

Set contains: tubes 2, 4, 6 and a plastic coupler.

Assembled in USA.

Korean components.

Pack	Ctn. Wt.	Cu.Ft
12	.6 Lbs.	.07

www.flowerstoat.com



4 PIECE STAR TUBE SET

No. 381 / UPC 0 14963 00381 7

Set contains: tubes 16, 21, 32 and a plastic coupler.

Assembled in USA.

Korean components.

Pack	Ctn. Wt.	Cu.Ft
12	.6 Lbs.	.07

4 PIECE LEAF TUBE SET

No. 382 / UPC 0 14963 00382 4

Set contains: tubes 67, 349, 352 and a plastic coupler.

Assembled in USA.

Korean components.

Pack	Ctn. Wt.	Cu.Ft
12	.6 Lbs.	.07



4 PIECE ROSE TUBE SET

No. 383 / UPC 0 14963 00383 1

Set contains: tubes 101, 102, 104 and a plastic coupler.

Assembled in USA.

Korean components.

Pack	Ctn. Wt.	Cu.Ft
12	.6 Lbs.	.07

4 PIECE RUFFLE TUBE SET

No. 384 / UPC 0 14963 00384 8

Set contains: tubes 030, 040, 070 and a plastic coupler.

Assembled in USA.

Korean components.

Pack	Ctn. Wt.	Cu.Ft
12	.6 Lbs.	.07





Jacqueline's Patisserie
Babylon, NY 11702



REVOLVING CAKE STAND WITH RECTANGULAR TOP

No. 614 / UPC 0 14963 00614 6

Use to decorate cakes. Stainless steel ball bearings make for smooth rotation.

Soft plastic cap on base prevents sliding.

Do not immerse in water when cleaning.

12" X 16" top. Height 4".

Made of aluminum.

Made in Korea.

Pack	Ctn. Wt.	Cu. Ft.
6	40.5 Lbs.	4.87



REVOLVING CAKE STAND

No. 613 / UPC 0 14963 00613 9

Use to decorate cakes. Stainless steel ball bearings make for smooth rotation.

Soft plastic cap on base prevents sliding.

12" diameter top. Height 4".

1 Non-Slip Pad included.

Do not immerse in water when cleaning.

Made of aluminum.

Made in Korea.

Pack	Ctn. Wt.	Cu. Ft.
6	32.3 Lbs.	4.27



REVOLVING CAKE STAND

No. 612 / UPC 0 14963 00612 2

Use to decorate cakes. Cast iron base has a new durable "powder coat" finish.

Top is made of .125" thick aluminum, 12" diameter top. Height 5".

1 Non-Slip Pad included.

Do not immerse in water when cleaning.

Made in USA.

Pack	Ctn. Wt.	Cu. Ft.
6	47 Lbs.	2.71



PRONGED PIVOT FOR TURNTABLE

No. 611 / UPC 0 14963 00611 5

Secures styrofoam cake dummy to decorate showcase cakes.

Use with Ateco #612 turntable base.

Do not immerse in water when cleaning.

Made of cast iron.

Made in China.

Pack	Ctn. Wt.	Cu. Ft.
1	1.8 Lbs	.06



REVOLVING CAKE STAND

No. 610 / UPC 0 14963 00610 8

Use to decorate cakes. Guidelines on top aid in decorating.

12" diameter top. Height 3.25".

1 Non-Slip Pad included.

Made of high impact plastic.

Made in USA.

Pack	Ctn. Wt.	Cu. Ft.
8	15.8 Lbs.	2.85



2-12" DIAMETER NON-SLIP CAKE STAND PADS

No. 620 / UPC 0 14963 00620 7

Use to secure cakes firmly on top of cake stands. Also used to secure the base of a cake stand to a counter top or work place.

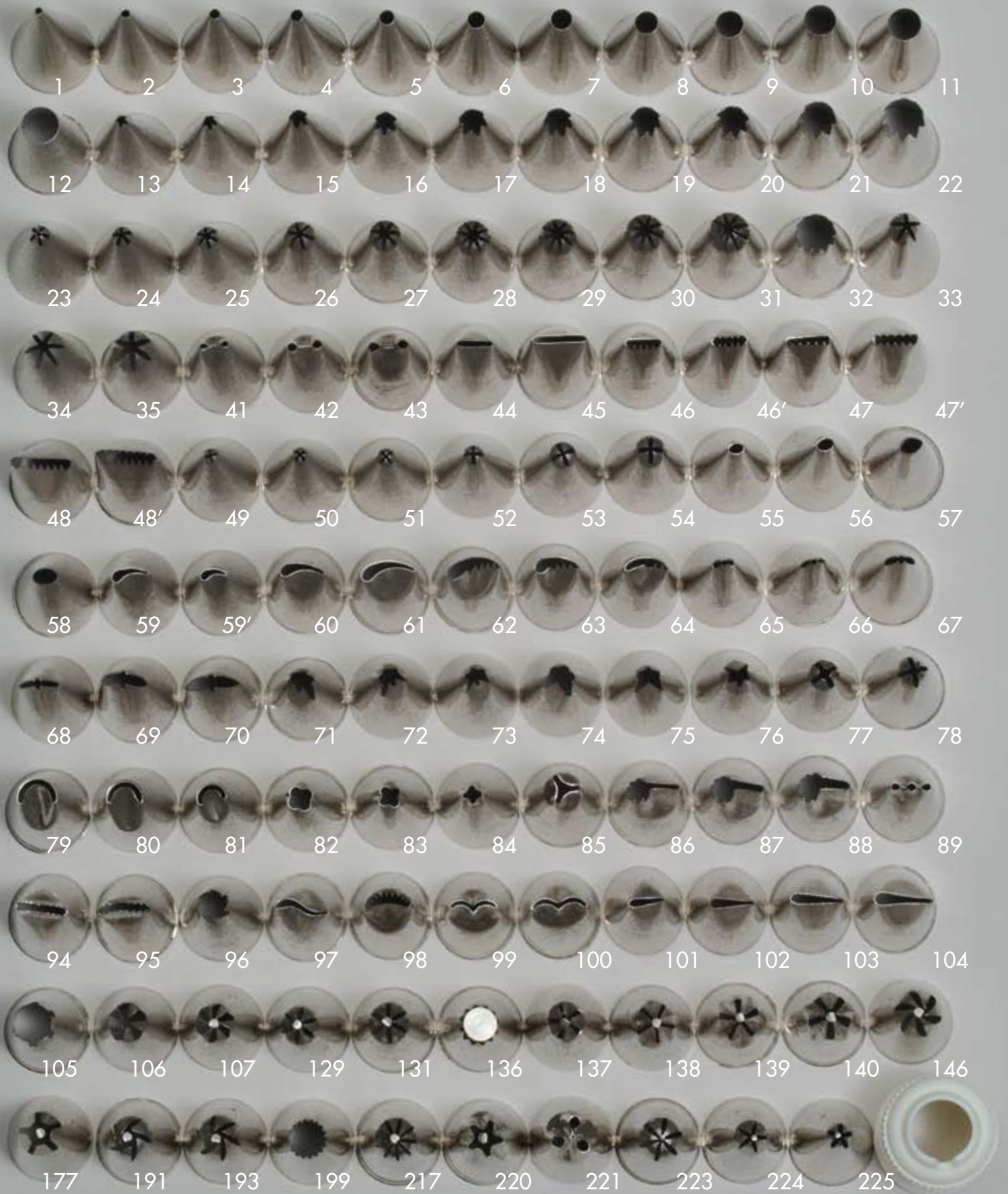
Made of food grade plastic.

Made in USA.

Pack	Ctn. Wt.	Cu. Ft.
50	8 Lbs.	.70



**All tubes on this page are actual size, fit standard coupler.
Made of stainless steel. Made in Korea**



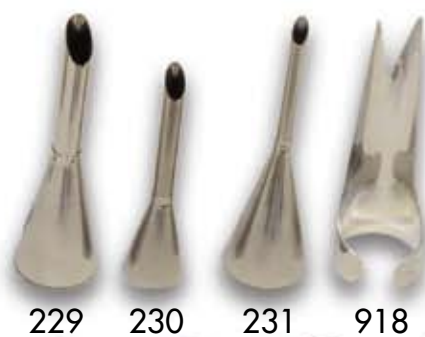
**All tubes on this page are actual size. Top three rows fit standard coupler.
Made of stainless steel. Made in Korea**





OPENING DIAMETER

		PLAIN*	STAR*	CLOSED STAR*	FRENCH
.16"	5/32"	800	820	840	860
.19"	3/16"	801	821	841	861
.25"	1/4"	802	822	842	862
.31"	5/16"	803	823	843	863
.38"	3/8"	804	824	844	864
.44"	7/16"	805	825	845	865
.05"	1/2"	806	826	846	866
.56"	9/16"	807	827	847	867
.63"	5/8"	808	828	848	868
.69"	11/16"	809	829	849	869



*897 (not shown) .875"



HI PRECISION DECORATING TUBES

No. 9000 22 Different styles (See price list for breakdown).

Made to exacting standards for unparalleled results.

Packaged in hangable self service package.

Made of 18/8 stainless steel.

Made in China.

Pack	Ctn. Wt.	Cu. Ft.
12	.4 Lbs.	.05



TUBES WITH HANGABLE PACKAGE

All Ateco decorating and pastry tubes are available with a hangable package and UPC. Simply add 20000 to the desired tube. For example rose tube 104, becomes 20104.



PLASTIC PASTRY TUBES

Plain and eight point closed star, precision molded plastic pastry tubes. Exceptional detail.

Made of poly carbonate.

Made in Korea.

Closed Star: 9903, 9905, 9907, 9909, 9911 and 9913

Plain: 9805, 9807, 9809, 9811, 9813, 9815, 9817 and 9819

Last two digits of the above item # indicate size of opening in millimeters.

9880 St.Honore

9352 Leaf

9104 Rose

9048 Basket weave



TUBE STORAGE BOXES

Protect and organize your loose decorating tubes and couplers.

Use 8788 for larger tubes.

Made of plastic.

Made in Korea.

No. / UPC	Compartments	Pack	Ctn. Wt	Cu.Ft.
8788 / 0 14963 08788 6	12	6	3.0 Lbs.	.23
8786 / 0 14963 08786 2	49	6	4.9 Lbs.	.37
8785 / 0 14963 08785 5	27	6	2.65 Lbs.	.22



TUBE STORAGE BOXES

Protect and organize your loose decorating tubes and couplers.

Use 8784 for larger tubes.

Made of plastic.

No. / UPC	Compartments	Pack	Ctn. Wt.	Cu.Ft.	Country of Origin	Master
8784 / 0 14963 08784 8	37	5	7.8 Lbs.	1.1	Korea	20
8783 / 0 14963 08783 1	52	6	3.6 Lbs.	.44	USA	48
8782 / 0 14963 08782 4	26	6	2.2 Lbs.	.26	USA	90

TUBE DISPLAY BOX WITH 64 DRAWERS

No. 8764

Helps retailer stock individual tubes by keeping them neat and orderly. Includes labels of 121 popular tubes, couplers and tube brushes. Display with cake decorating reference manual.

Made of plastic.

Made in USA.

Pack	Ctn. Wt.	Cu. Ft.
2	15 Lbs.	2.47

CAKE DECORATING REFERENCE MANUAL

No. 486 / UPC 0 14963 00486 9

Shows decorations that can be achieved using over 75 of our most popular tubes.

Made in USA.

Pack	Ctn. Wt.	Cu. Ft.
200	45 Lbs.	1.0



STANDARD PLASTIC COUPLER

Allows decorator to interchange standard and other small tubes without emptying the contents of the decorating bag.

Made of plastic.

Made in Korea.

No. / UPC	Description	Pack	Ctn. Wt.	Cu. Ft.	Master
400	Standard Coupler	50	.5 Lbs.	.05	4000
406	6 Replacement Rings				
398/0 14963 00398 5	4 Pack of Couplers				



4 TUBE COVERS

No. 399 / UPC 0 14963 00399 2

Use to cover the tube of filled decorating bag to prevent it from leaking or icing from hardening at the tube crown. Great for refrigeration, transportation or storage of filled bags. Fits over tube and affixes to standard coupler nut.

Made of plastic.

Made in Korea.

Pack	Ctn. Wt.	Cu. Ft.
12	.4 Lbs.	.05



MEDIUM AND LARGE COUPLERS

Couplers allow the decorator to change similar sized tubes without emptying the contents of the decorating bag. 402 also accommodates standard coupler.

Made of plastic.

Made in Korea.

No.	Description	Fits	Pack	Ctn. Wt.	Cu.Ft.	Master
402	Three Pc. Coupler	Med.	12	0.8 Lbs.	.07	480
404	Large Pl. Coupler	Large	12	0.6 Lbs.	.06	480



STANDARD METAL COUPLER AND REPLACEMENT NUT

Allows decorator to interchange standard and other small tubes without emptying the contents of the decorating bag. Replacement nut also fits plastic coupler base.

Made of nickel plated brass.

Made In Korea.

No.	Description	Pack	Ctn. Wt.	Cu. Ft.
405	Standard Metal Coupler	25	2.0 Lbs.	.03
405N	1 Metal Replacement Nut			





WUNDERBAGS

Designed for the professional baker and pastry chef. Heavy weight construction provides exceptional durability. Each bag has reinforced tip and hemmed top with hanging loop. Made of thick cotton felt coated with polyurethane. Softens with use.

Made in Germany.

No.	Length	Pack	Ctn Wt.	Cu. Ft.	Master
3410	10"	12	0.5 Lbs.	.06	864
3412	12"	12	0.6 Lbs.	.06	864
3414	14"	12	0.7 Lbs.	.06	864
3416	16"	12	0.8 Lbs.	.06	864
3418	18"	12	1.0 Lbs.	.06	504
3420	20"	12	1.2 Lbs.	.06	432
3424	24"	12	1.4 Lbs.	.11	432
3428	28"	12	1.9 Lbs.	.11	432

POLYURETHANE DECORATING BAGS

Designed for bakers and enthusiasts. Flexible, leak proof, and strong.

Made of polyester sheeting, triple coated with polyurethane.

Made in Japan.

No.	UPC	Length	Pack	Ctn Wt.	Cu. Ft.	Master
3308	0 14963 03308 1	08"	12	0.2 Lbs.	.04	864
3310	0 14963 03310 4	10"	12	0.2 Lbs.	.04	864
3312	0 14963 03312 8	12"	12	0.2 Lbs.	.04	864
3314	0 14963 03314 2	14"	12	0.4 Lbs.	.04	864
3316	0 14963 03316 6	16"	12	0.4 Lbs.	.04	864

Reinforced tip and hemmed top with hanging loop.

3318	0 14963 03318 0	18"	12	0.6 Lbs.	.08	576
3321	0 14963 03321 0	21"	12	0.8 Lbs.	.08	576
3324	0 14963 03324 1	24"	12	1.0 Lbs.	.08	576

CANVAS DECORATING BAGS

The preference of the traditionalist. Great for drop cookies, piping mashed potatoes, or piping other non greasy foods. All sizes feature hemmed tip, french seamed side, stitched top with rustproof eyelet. The finest quality canvas bag made. All sizes feature hemmed tip which should not be cut.

Made in USA.

No.	Length	Pack	Ctn Wt.	Cu. Ft.	Master
Fits standard coupler and 0-6 size pastry tubes					
3210	10"	12	0.6 Lbs.	.06	864
3212	12"	12	0.8 Lbs.	.06	864
3214	14"	12	0.8 Lbs.	.06	864
3216	16"	12	1.2 Lbs.	.11	504

Fits 4-9 size pastry tubes

3218	18"	12	1.6 Lbs.	.11	504
3221	21"	12	2.2 Lbs.	.11	432
3224	24"	12	2.6 Lbs.	.11	432

PLASTIC COATED DECORATING BAGS

Designed for both food service and home use. Great for piping foods. It's easy to clean, economically priced and won't slip in your hand. Made of print cloth, lined with polyethylene.

All sizes have rustproof eyelets.

Made in USA.

No.	UPC	Length	Pack	Ctn Wt.	Cu. Ft.	Master
3108	0 14963 03108 7	08"	12	0.4 Lbs.	.06	864
3110	0 14963 03110 0	10"	12	0.6 Lbs.	.06	864
3112	0 14963 03112 4	12"	12	0.6 Lbs.	.06	864
3114	0 14963 03114 8	14"	12	0.6 Lbs.	.06	864
3116	0 14963 03116 2	16"	12	0.8 Lbs.	.06	864
3118	0 14963 03118 6	18"	12	1.2 Lbs.	.11	504
3121	0 14963 03121 6	21"	12	1.4 Lbs.	.11	432
3124	0 14963 03124 7	24"	12	1.8 Lbs.	.11	432

FLEX BAGS

Designed for the value conscious enthusiast or professional. Now made with a more durable material and impulse sealed for longer life.

Made of polyurethane coated nylon.

Made in Korea.

No.	UPC	Length	Pack	Ctn Wt.	Cu. Ft.
3008	0 14963 03008 0	08"	12	0.1 Lbs.	.02
3010	0 14963 03010 3	10"	12	0.1 Lbs.	.02

Hemmed top with hanging loop.

3012	0 14963 03012 7	12"	12	0.1 Lbs.	.04
3014	0 14963 03014 1	14"	12	0.4 Lbs.	.04
3016	0 14963 03016 5	16"	12	0.6 Lbs.	.06

Reinforced tip. Hemmed top with hanging loop.

3018	0 14963 03018 9	18"	12	0.8 Lbs.	.08
3021	0 14963 03021 9	21"	12	1.0 Lbs.	.09
3024	0 14963 03024 0	24"	12	1.0 Lbs.	.09
3025*	0 14963 03025 7	24"	12	1.2 Lbs.	.11

*3025 - 24" Flex bag w/opening to accommodate 789 cake icer tube.





CLEAR DISPOSABLE BAGS

Save time by eliminating clean up. Simply cut end of bag and insert the tube of your choice. Won't stretch or balloon when piping thick frosting through small opening tubes. The strongest disposable bag available. Use with hot or cold foods. Made of .0035" polypropylene. Enhanced material is softer and less slippery than previous one.

Made in USA.

No.	UPC	Length	Count	Pack	Ctn. Wt.	Cu. Ft.	Master
460	0 14963 00460 9	12"	10 Package	12	1.4 Lbs.	.1	288
461	0 14963 00461 6	12"	100 Package	10	10.2 Lbs.	0.37	50
463	0 14963 00463 0	12"	200 Dispenser Box	12	33.8 Lbs.	3.12	
468	0 14963 00468 2	18"	10 Package	12	2.8 Lbs.	3.12	144
469	0 14963 00469 2	18"	100 Package	10	26.5 Lbs.	0.90	50
467	0 14963 00467 8	18"	200 Dispenser Box	6	35.75 Lbs.	3.12	



SOFT DISPOSABLE BAGS

Save time by eliminating clean up. Simply cut end of bag and insert the tube of your choice. New material is pliable and flexible for better feel. Not slippery to the touch like other disposable bags. Use with hot or cold foods. Made of .0045" polyethylene.

Made in USA.

No.	UPC	Length	Count	Pack	Ctn. Wt.	Cu. Ft.	Master
4605	0 14963 04605 0	12"	10 Package	12	1.6 Lbs.	0.37	288
4625	0 14963 04625 8	12"	50 Package	6	4.6 Lbs.	0.44	
4615	0 14963 04615 9	12"	100 Package	10	11.2 Lbs.	0.37	50
4635	0 14963 04635 7	12"	200 Dispenser Box	12	39.5 Lbs.	3.12	
4685	0 14963 04685 2	18"	10 Package	12	3.4 Lbs.	0.18	144
4695	0 14963 04695 1	18"	100 Package	10	27.2 Lbs.	0.90	50
4675	0 14963 04675 3	18"	200 Dispenser Box	6	41.4 Lbs.	3.12	



DISPENSER FOR DISPOSABLE DECORATING BAGS

No. 4610

Conveniently stores and dispenses a package of 100 Ateco 12" or 18" disposable decorating bags. Keeps bags free of dust.

16.5" x 12" x 2.7"

Made of stainless steel.

Made in USA.

Pack	Ctn. Wt.	Cu. Ft.
1	2.9 Lbs.	.27



NON-SLIP DISPOSABLE DECORATING BAGS

No. 4622 / UPC 0 14963 04622 7

Save time by eliminating clean-up. 100 bags per roll. Packaged in a convenient dispenser box. Use with hot or cold foods.

Length 22"

Made of .0035" polyethylene.

Made in Japan.

Pack	Ctn. Wt.	Cu. Ft.
12	45 Lbs.	2.1



STRIPER BAG INSERTS

No. 465 / UPC 0 14963 00465 4

Use to pipe two different colors through one tube. Fill each half of the bag with the color you desire. Cut end and place in a re-usable bag with a coupler and desired tube already affixed. Now wider for easier filling.

Made of polyethylene.

Made in USA.

Length	Count	Pack	Ctn. Wt.	Cu. Ft.	Master
18"	10 Pkg.	12	4.6 Lbs.	0.18	144



DECORATING BAG STAND

No. 4914 / UPC 0 14963 04914 3

Holds filled decorating bags upright so they don't spill when in use. Accommodates large and small bags. Place stand on counter or mount on wall.

Made of stainless steel and food grade plastic.

Made in China.

Pack	Ctn. Wt.	Cu. Ft.
1	4.1 Lbs.	.48



DISCONTINUED

TWO REPLACEMENT CONES ONLY

No. 4915 / UPC 0 14963 04915 0

Prevent filled decorating bag from spilling when not in hand.

Use with bag stand above or use them separately by simply hanging them on a hook.

Made of food grade plastic.

Made in China.

Pack	Ctn. Wt.	Cu. Ft.
6	2.5 Lbs.	.85



DECORATING SYRINGE

No. 700 / UPC 0 14963 00700 6

One turn removes or fastens either plastic cap and makes refilling and cleaning fast and easy.

Wing cap designated to accommodate one handed decorating. Syringe fits over 100 different Ateco decorating tubes. Syringe holds 3.5 fluid ozs.

Barrel is made of rust proof aluminum.

Made in USA.

Pack	Ctn. Wt.	Cu. Ft.	Master
12	3 Lbs.	.49	96



PARCHMENT TRIANGLES

Inexpensive and disposable. Simply make triangles into a cone and insert the tube of your choice.

Instructions on package.

Made of pure parchment.

Made in USA.

No.	UPC	Dimensions	Cone Size	Count	Pack	Ctn. Wt.	Cu. Ft.
450	0 14963 00450 0	15" X 15" X 21"	7"	100 Polybag	50	41 Lbs.	1.11
452	0 14963 00452 4	18" X 18" X 24"	9"	100 Polybag	36	44 Lbs.	1.10



PARCHMENT TRIANGLE IN DISPENSER BOX

No. 454 / UPC 0 14963 00454 8

Inexpensive and disposable. Simply make triangles into a cone and insert the tube of your choice.

Instructions on package.

Made of pure parchment.

Made in USA.

Dimensions	Cone Size	Count	Pack	Ctn. Wt.	Cu. Ft.
18" X 18" X 24"	9"	500 Disp. Box	6	41 Lbs.	1.61





Sweet Karma Baking
East Meadow, NY 11554

PROFESSIONAL ROLLING PIN

Barrel and handles made of solid rock maple.
Rust proof ball bearings provide smooth and free rotation.
4.5" handles.
Made in USA.

No.	UPC	Barrel Length	Barrel Diameter	Pack	Ctn. Wt.	Cu. Ft.
18325	0 14963 18325 0	18"	3.25"	3	15.6 Lbs.	.59
15300	0 14963 15300 0	15"	3"	3	12.4 Lbs.	.5
12275	0 14963 12275 4	12"	2.75"	3	9.2 Lbs.	.48



LACE DESIGN SLEEVE 18"

No. 18402 / UPC 0 14963 18402 8
Emboss a lace design on fondant, gum paste or marzipan. Slide design sleeve over Ateco 18" rolling pin (#18325) and depress with one firm pass over previously rolled out sugar paste.
Made of food grade plastic.
Made in China.

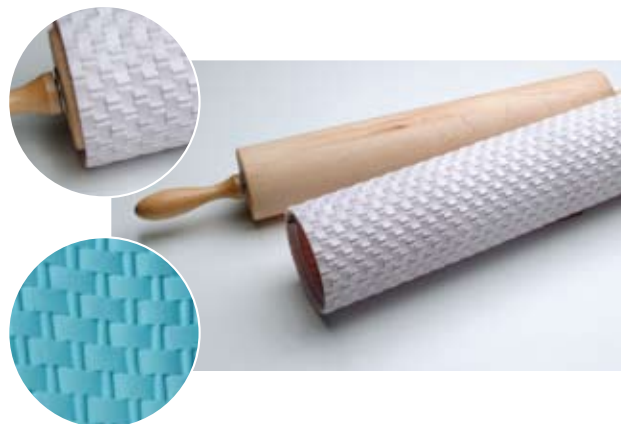
Pack	Ctn. Wt.	Cu. Ft.
6	5.2 Lbs.	.9



BASKET WEAVE DESIGN SLEEVE 18"

No. 18400 / UPC 0 14963 18400 4
Emboss a basket weave design on fondant, gum paste or marzipan, with one firm pass. Designed to be used with Ateco 18" rolling pin, but can be used with 15" or larger rolling pin.
Made of food grade plastic.
Made in China.

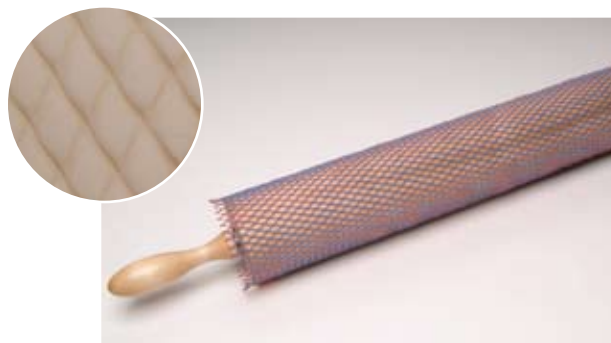
Pack	Ctn. Wt.	Cu. Ft.
12	25 Lbs.	3.1



DIAMOND IMPRESSION SLEEVE 18"

No. 18404 / UPC 0 14963 18404 2
Emboss diamond impressions on fondant, gum paste or marzipan. Slide over Ateco 18" rolling pin #18325. Only functions with a 3.25" diameter rolling pin.
Made of food grade plastic.
Made in Canada.

Pack	Ctn. Wt.	Cu. Ft.
12	2.4 Lbs.	.45



SILICONE ROLLING PIN SLEEVE 18"

No. 18406 / UPC 0 14963 18406 6
Slide silicone rolling pin sleeve over Ateco 18" rolling pin * Made to specifically fit Ateco #18325, to create a non-stick rolling surface. When rolling fondant use Corn Starch to further prevent sticking.
Made of food grade silicone.
Made in China.

Pack	Ctn. Wt.	Cu. Ft.
12	6 Lbs.	.7





WOOD ROLLING PIN 19"

No. 19176 / UPC 0 14963 19176 7

Diameter 1.75".

Made of Maple.

Made in Canada.

Pack	Ctn. Wt.	Cu. Ft.
12	13.9 Lbs.	.62



FRENCH ROLLING PIN WITH TAPERED ENDS 20"

No. 20175 / UPC 0 14963 20175 6

Made of Maple.

Made in Canada.

Pack	Ctn. Wt.	Cu. Ft.
12	7.9 Lbs.	.4



PLASTIC ROLLING PIN 20"

No. 19175 / UPC 0 14963 19175 0

Specifically designed for rolled fondant and gum paste.

Made of a dense FDA grade plastic that is machined for a smooth, flat non-stick finish.

Made in China.

Usable Length	Barrel Diameter	Pack	Ctn. Wt.	Cu. Ft.
19.5"	1.75"	12	20.6 Lbs.	.05



SMALL PLASTIC ROLLING PINS

Specifically designed for rolled fondant and gum paste.

Made of a dense FDA grade plastic #7510 is machined for a smooth, flat non-stick finish.

Made in China.

No.	UPC	Usable Length	Diameter	Pack	Ctn. Wt.	Cu. Ft.
6575	0 14963 06575 4	04.5"	0.75"	12	01.2 Lbs.	.07
7510	0 14963 07510 4	07.5"	1.00"	12	02.8 Lbs.	.08



DOUBLE ENDED BALL TOOL

No. 4214 / UPC 0 14963 04214 4

Cup, shape and ruffle sugar paste petals and other decorations.

.75" & 1" diameter .

Made of food grade plastic.

Made in China.

Pack	Ctn. Wt.	Cu. Ft.
24	6 Lbs.	.16

FOAM MODELING PAD 9"

No. 694 / UPC 0 14963 00694 8

To give sugar paste decorations dimension.

Use with ball and sculpting tools.

Made of food grade foam.

Made in USA.

Pack	Ctn. Wt.	Cu. Ft.
12	1.7 Lbs.	.70

FONDANT WORK MAT

No. 698 / UPC 0 14963 00698 6

Non-stick surface for rolling out fondant or gum paste. Easy to read grid allows you to roll out proper size to cover your cake. Measures 36" x 24" x .03"

Now thicker and heavier. Will not delaminate, even when put through a sheeter.

Made of fiberglass surrounded in 100% food grade silicone. FDA and LMBG approved.

Made in China.

Pack	Ctn. Wt.	Cu. Ft.
6	8.3 Lbs.	.40



SILICONE WORK MAT

No. 697 / UPC 0 14963 00697 9

Provides a non stick work surface for fondant,

cookies, pastries or bread. Measures 36" x 24" x .07"

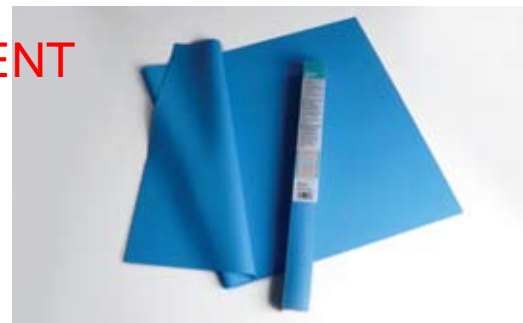
Measurements debossed in mat around perimeter for reference.

Made of 100% food grade silicone. FDA and LMBG approved.

Made in China.

Pack	Ctn. Wt.	Cu Ft.
6	16.5 Lbs.	.44

TRANSLUCENT
BLUE



SILICONE WORK MAT

No. 699 / UPC 0 14963 00699 3

Provides a non stick work surface for fondant,

cookies, pastries or bread. Measures 24" x 24" x .07"

Measurements debossed in mat around perimeter for reference.

Made of 100% food grade silicone. FDA and LMBG approved.

Made in China.

Pack	Ctn. Wt.	Cu Ft.
6	11 Lbs.	.44

TRANSLUCENT BLUE



PASTRY CLOTH AND ROLLING PIN COVER

No. 690 / UPC 0 14963 00690 0

The pastry cloth is made of canvas material that is treated with a release agent that resists grease and moisture and has the necessary stiffness to roll cookies, pie crusts, and pasta. Perimeter of pastry cloth is stitched to prevent fraying or tearing. Pastry cloth measures 25" X 20". Multilingual instructions and recipes included. Custom sizes and alternative canvas material are available upon request.

Made in USA.

Pack	Ctn. Wt.	Cu. Ft.
100	28.6 Lbs.	1.34

NON-SLIP PASTRY CLOTH PAD (insert)

Use to prevent pastry cloth from slipping on counter top.

No. 692 / UPC 0 14963 00692 4

Made in USA.

Pack	Ctn. Wt.	Cu. Ft.
100	21.0 Lbs.	1.34



CANVAS PASTRY CLOTH AND ROLLING PIN COVER

No. 691 / UPC 0 14963 00691 7

Use for rolling pie crusts, cookies, pizza dough or noodles. Sewn edges add durability and eliminate fraying. Silk screened concentric circles, verticle/horizontal measurements aid in sizing dough.

Made of cotton.

Made in USA.

Pack	Ctn. Wt.	Cu. Ft.
12	3.2 Lbs.	.21

ROLLING PIN COVER (insert)

No. 696 / UPC 0 14963 00696 2

Made in USA.

Pack	Ctn. Wt.	Cu. Ft.
6	2.2 Lbs.	.43





4 PIECE ROUND FOOD MOLDING SET

No. 4950 / UPC 0 14963 04950 1

Form, compress and transfer foods, salads and desserts. Set includes: 2 rings 2.75" Diameter. x 2.1" high, fitted press and transfer plate with silicone handles.
Made of stainless steel and silicone.
Made in China.

Pack	Ctn. Wt.	Cu. Ft.
4	3.0 Lbs.	.185

Ring Mold Only

No. 4951 / UPC 0 14963 04951 8

Pack	Ctn. Wt.	Cu. Ft.
12	1.5 Lbs.	.06



4 PIECE ROUND FOOD MOLDING SET

No. 4952 / UPC 0 14963 04952 5

Form, compress and transfer foods, salads and desserts.
Set includes: 2 rings 3.5" diameter x 2.1" high, fitted press and transfer plate with silicone handles.
Made of stainless steel and silicone.
Made in China.

Pack	Ctn. Wt.	Cu. Ft.
4	4.0 Lbs.	.28

Ring Mold Only

No. 4953 / UPC 0 14963 04953 2

Pack	Ctn. Wt.	Cu. Ft.
12	3.2 Lbs.	.10



ADJUSTABLE RING MOLD/5 IN ONE

No. 4911 / UPC 0 14963 04911 2

For foods, salads, and desserts.
Ring can be adjusted to 2.75", 3", 3.2", 3.4 and 3.6" diameter. 2.15" high.
Made of stainless steel.
Made in China.

Pack	Ctn. Wt.	Cu. Ft.
24	3.6 Lbs.	.34



ROUND FORMS

Made of stainless steel.
Made in China.

No.	UPC	Dia.	Height	Pack	Ctn. Wt.	Cu. Ft.
4901	0 14963 04901 3	3"	1.75"	12	2.2 Lbs.	.13
4903	0 14963 04903 7	2"	1.75"	12	1.4 Lbs.	.07
4909	0 14963 04909 9	2"	3"	12	2.6 Lbs.	.11



OVAL FORMS

Made of stainless steel.
Made in China.

No.	UPC	Dia.	Height	Pack	Ctn. Wt.	Cu. Ft.
4902	0 14963 04902 0	4"	1.38"	12	2.6 Lbs.	.06
4906	0 14963 04906 0	3.13"	1.38"	12	1.6 Lbs.	.03





PYRAMID MOLDS

Made of stainless steel.

Made in China.

No.	UPC	Base	Height	Pack	Ctn. Wt.	Cu. Ft.
4935	0 14963 04935 8	2.25"	1.5"	10	1.0 Lbs.	.01
4936	0 14963 04936 5	3.5"	2.5"	24	5.4 Lbs.	.07
4937	0 14963 04937 2	4.75"	3.25"	10	4.4 Lbs.	.08



HALF SPHERE MOLD

No. 4930

UPC 0 14963 04930 3

3" diameter x 1.75" high. 4 fluid ozs.

Made of stainless steel.

Made in China.

Pack	Ctn. Wt.	Cu. Ft.
12	1.5 Lbs.	.13

TALL RUM BABA MOLD

No. 4943

UPC 0 14963 04943 3

3" high, 1.37" diameter bottom

Made of stainless steel.

Made in China.

Pack	Ctn. Wt.	Cu. Ft.
12	1.2 Lbs.	.03

RUM BABA MOLD

No. 4942

UPC 0 14963 04942 6

2" high. 3 fluid ozs.

Made of stainless steel.

Made in China.

Pack	Ctn. Wt.	Cu. Ft.
12	1.1 Lbs.	.03



SQUARE FORMS

Made of stainless steel.

Made in China.

No.	UPC	Length	Height	Pack	Ctn. Wt.	Cu. Ft.
4905	0 14963 04905 1	2"	1.75"	12	2.0 Lbs.	.06
4904	0 14963 04904 4	2.75"	1.25"	12	2.4 Lbs.	.1



DIAMOND FORM

No. 4908 / UPC 0 14963 04908 2

3.5" length x 1.4" height

Made of stainless steel.

Made in China.

Pack	Ctn. Wt.	Cu. Ft.
12	2.0 Lbs.	.06

RECTANGLE FORM

No. 4907 / UPC 0 14963 04907 5

2.5" length x 1.75" height

Made of stainless steel.

Made in China.

Pack	Ctn. Wt.	Cu. Ft.
12	2.0 Lbs.	.08



HEXAGON FORM

No. 4910 / UPC 0 14963 04910 5

2.3" wide x 1.4" high

Made of stainless steel.

Made in China.

Pack	Ctn. Wt.	Cu. Ft.
12	2.6 Lbs.	.07

HEART SHAPED FORM

No. 4900 / UPC 0 14963 04900 6

3" wide x 1.4" high

Made of stainless steel.

Made in China.

Pack	Ctn. Wt.	Cu. Ft.
12	2.6 Lbs.	.06

4 PIECE FRUIT SHAPED RING MOLD SET

No. 1426 / UPC 0 14963 01426 4

Use to cut dough.

Set includes: an apple, strawberry, pineapple, and pear.

Made of stainless steel.

Made in China.

Pack	Ctn. Wt.	Cu. Ft.
12	3.6 Lbs.	.19



TERRINE MOLDS WITH COVERS

Use to make pate, loaf cakes, custards and ice cream. Oven, refrigerator and freezer compatible.

Made of surgical quality stainless steel.

Made in China.

ROUND BOTTOM

No. 4918 / UPC 0 14963 04918 1

11.75" long x 2.25" high

Pack	Ctn. Wt.	Cu. Ft.	Master
4	1.7 Lbs.	.09	20

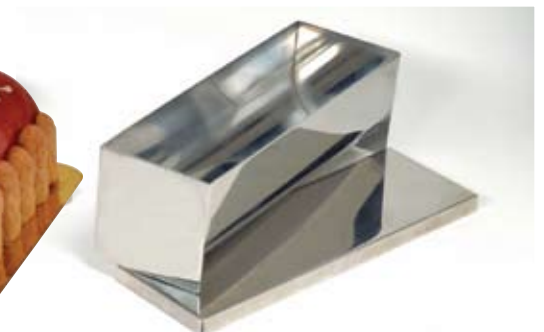


ROUND BOTTOM

No. 4916 / UPC 0 14963 04916 7

9" long x 3" high

Pack	Ctn. Wt.	Cu. Ft.	Master
6	1.6 Lbs.	.05	18



FLAT BOTTOM

No. 4920 / UPC 0 14963 04920 4

11.75" long x 2.25" high

Pack	Ctn. Wt.	Cu. Ft.	Master
4	1.6 Lbs.	.05	20



CONE SHAPED BOTTOM

No. 4922 / UPC 0 14963 04922 8

11.75" long x 2.25" high

Pack	Ctn. Wt.	Cu. Ft.	Master
4	1.7 Lbs.	.09	20





TARTLET MOLDS

No. 4840 / UPC 0 14963 04840 5

Use for tarts, puff pastries or appetizers. 12 shapes, 6 of each.

Made of tinplate.

Made in China.

Pack	Ctn. Wt.	Cu. Ft.
6	6 Lbs.	0.19



CANNOLI KIT

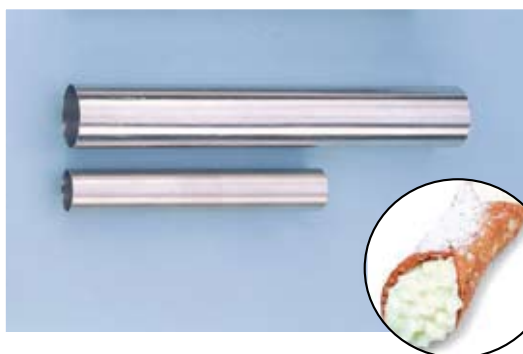
No. 660 /UPC 0 14963 00660 3

Kit contains: four stainless steel 5.63" long and .88" diameter cannoli forms and an authentic Italian recipe.

Assembled in USA.

Cannoli forms made in Korea.

Pack	Ctn. Wt.	Cu. Ft.
12	3.4 Lbs.	.29

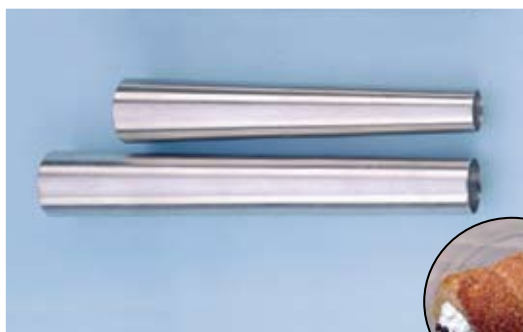


CANNOLI FORMS

Made of stainless steel.

Made in Korea.

No.	Length	Diameter	Pack	Ctn. Wt.	Cu. Ft.	Master
924	5.63"	.88"	12	1.1 Lbs.	.03	72
923	3.63"	.56"	12	0.4 Lbs.	.02	72



CREAM ROLL FORMS

Made of stainless steel.

Made in Korea.

No.	Length	Diameter	Pack	Ctn. Wt.	Cu. Ft.
921	5.25"	.9" - .63"	12	0.8 Lbs.	.03
922	6.5"	.9" - .81"	12	1.2 Lbs.	.03



LADY LOCK FORMS

Made of stainless steel.

Made in Korea.

No.	Length	Diameter	Pack	Ctn. Wt.	Cu. Ft.
928	6.4"	1.88" - 3.2"	12	2.8 Lbs.	.03
927	4.4"	1.4" - 3.2"	12	1.6 Lbs.	.02

12 PIECE PLAIN ROUND CUTTER SET

No. 5457 / UPC 0 14963 05457 4

Cutters range from .88" to 4.4".

Made of stainless steel.

Made in China.

Pack	Ctn Wt.	Cu. Ft.	Master
6	4.4 Lbs.	.16	72



11 PIECE PLAIN ROUND CUTTER SET

No. 5357 / UPC 0 14963 05357 7

Cutters range from .75" to 3.63".

Made of stainless steel.

Made in China.

Pack	Ctn Wt.	Cu. Ft.	Master
12	6.7 Lbs.	.21	96



9 PIECE PLAIN OVAL CUTTER SET

No. 5254 / UPC 0 14963 05254 9

Cutters range from 1.1" to 3.4".

Made of stainless steel.

Made in China.

Pack	Ctn Wt.	Cu. Ft.	Master
12	4.4 Lbs.	.14	96



6 PIECE PLAIN TEAR DROP CUTTER SET

No. 5252 / UPC 0 14963 05252 5

Cutters range from 1.88" to 3.75".

Made of stainless steel.

Made in China.

Pack	Ctn Wt.	Cu. Ft.	Master
12	3.8 Lbs.	.18	96



6 PIECE PLAIN FOOTBALL CUTTER SET

No. 5255 / UPC 0 14963 05255 6

Cutters range from 1.9" to 3.75".

Made of stainless steel.

Made in China.

Pack	Ctn Wt.	Cu. Ft.	Master
12	5.0 Lbs.	.19	96





12 PIECE FLUTED ROUND CUTTER SET

No. 5407 / UPC 0 14963 05407 9

Cutters range from .75" to 4.38".

Made of stainless steel.

Made in China.

Pack	Ctn Wt.	Cu. Ft.	Master
6	5.0 Lbs.	.16	72



11 PIECE FLUTED ROUND CUTTER SET

No. 5307 / UPC 0 14963 05307 2

Cutters range from .75" to 3.5".

Made of stainless steel.

Made in China.

Pack	Ctn Wt.	Cu. Ft.	Master
12	6.7 Lbs.	.21	96



9 PIECE FLUTED OVAL CUTTER SET

No. 5204 / UPC 0 14963 05204 4

Cutters range from 1" to 3.13".

Made of stainless steel.

Made in China.

Pack	Ctn Wt.	Cu. Ft.	Master
12	4.4 Lbs.	.14	96



5 PIECE FLUTED TEAR DROP CUTTER SET

No. 5202 / UPC 0 14963 05202 0

Cutters range from 2.13" to 4.5".

Made of stainless steel.

Made in China.

Pack	Ctn Wt.	Cu. Ft.	Master
6	2.8 Lbs.	.14	72



5 PIECE FLUTED FOOTBALL CUTTER SET

No. 5205 / UPC 0 14963 05205 1

Cutters range from .88" to 4.38".

Made of stainless steel.

Made in China.

Pack	Ctn Wt.	Cu. Ft.	Master
6	2.6 Lbs.	.15	72

6 PIECE PLAIN SQUARE CUTTER SET

No. 5253 / UPC 0 14963 05253 2

Cutters range from 1.38" to 2.63".

Made of stainless steel.

Made in China.

Pack	Ctn Wt.	Cu. Ft.	Master
12	5.8 Lbs.	.19	96



6 PIECE PLAIN HEXIGON CUTTER SET

No. 5251 / UPC 0 14963 05251 8

Cutters range from 1.63" to 3".

Made of stainless steel.

Made in China.

Pack	Ctn Wt.	Cu. Ft.	Master
12	5.6 Lbs.	.19	96



8 PIECE STAR CUTTER SET

No. 7808 / UPC 0 14963 07808 2

Cutters range from 1.5" - 7.5" and measures 1" high.

Made of stainless steel.

Made in China.

Pack	Ctn Wt.	Cu. Ft.	Master
6	7 Lbs.	.31	24



8 PIECE DIAMOND CUTTER SET

No. 5259 / UPC 0 14963 05259 4

Cutters range from 1" to 4.5".

Made of stainless steel.

Made in China.

Pack	Ctn. Wt.	Cu. Ft.	Master
12	7.8 Lbs.	.43	48



6 PIECE PLAIN HEART CUTTER SET

No. 7804 / UPC 0 14963 07804 4

Cutters range from 1.75" to 3.75".

Made of stainless steel.

Made in China.

Pack	Ctn Wt.	Cu. Ft.	Master
12	5.5 Lbs.	.18	96





5 PIECE FLUTED SQUARE CUTTER SETS

No. 5203 / UPC 0 14963 05203 7

Cutters range from 1.2" to 3".

Made of stainless steel.

Made in China.

Pack	Ctn. Wt.	Cu. Ft.	Master
6	3.0 Lbs.	.1	72



5 PIECE FLUTED HEXAGON CUTTER SETS

No. 5201 / UPC 0 14963 05201 3

Cutters range from 1.38" to 3.13".

Made of stainless steel.

Made in China.

Pack	Ctn. Wt.	Cu. Ft.	Master
12	4.6 Lbs.	.19	96



5 PIECE PLAIN STAR CUTTER SET

No. 7805 / UPC 0 14963 07805 1

Cutters range from 1.75" to 3.5".

Made of stainless steel.

Made in China.

Pack	Ctn. Wt.	Cu. Ft.	Master
12	5.5 Lbs.	.18	96



6 PIECE PLAIN TRIANGLE CUTTER SET

No. 5256 / UPC 0 14963 05256 3

Cutters range from 3.75" to 3.5" and measure

2" high. Use to cut pastry, dough, or as a form for food.

Made of stainless steel.

Made in China.

Pack	Ctn. Wt.	Cu. Ft.	Master
12	7 Lbs.	.14	48



6 PIECE PLAIN DAISY CUTTER SET

No. 7806 / UPC 0 14963 07806 8

Cutters range from 1.5" to 3.75".

Made of stainless steel.

Made in China.

Pack	Ctn. Wt.	Cu. Ft.	Master
12	5.5 Lbs.	.18	96

5 PIECE SNOWFLAKE CUTTER SET

No. 4843 / UPC 0 14963 04843 6

Each cutter has a distinct shape and size that enable them to nest into a storage tin. Cutters range from 1.5" to 5".

Made of stainless steel.

Made in China.

Pack	Ctn. Wt.	Cu. Ft.
6	4.2 Lbs.	.17



7 PIECE LEAF CUTTER SET

No. 4852 / UPC 0 14963 04852 8

Each cutter measures approximately 2".

Made of stainless steel.

Made in China.

Pack	Ctn. Wt.	Cu. Ft.	Master
12	3.6 Lbs.	.17	96



12 PIECE COUNTRY CUTTER SET

No. 4850 / UPC 0 14963 04850 4

Each cutter measures approximately 1.5".

Made of stainless steel.

Made in China.

Pack	Ctn. Wt.	Cu. Ft.	Master
12	3.8 Lbs.	.19	96



10 PIECE ANIMAL CUTTER SET

No. 7025 / UPC 0 14963 07025 3

Each cutter measures approximately 1.5".

Made of stainless steel.

Made in China.

Pack	Ctn. Wt.	Cu. Ft.	Master
24	5.8 Lbs.	.24	192



9 PIECE NUMBERS CUTTER SET

No. 7802 / UPC 0 14963 07802 0

Each cutter measures approximately 1.5".

Made of stainless steel.

Made in China.

Pack	Ctn. Wt.	Cu. Ft.	Master
24	5.8 Lbs.	.24	192





GEOMETRIC SHAPES CUTTER SET

No. 4845 / UPC 0 14963 04845 0

3 sizes of 8 shapes. Sizes range from .5" to 2"

All cutters are .75" high.

Made of stainless steel.

Made in Indonesia.

Pack	Ctn. Wt.	Cu. Ft.
12	4.9 lbs.	.17



FLOWER AND LEAF CUTTER SET

No. 4849 / UPC 0 14963 04849 8

Set contains: 3 daisy cutters, 3 calyx cutters, 3 rose petal cutters and 3 rose leaf cutters.

Cutters range from .75" to 1.75".

Made of stainless steel.

Made in China.

Pack	Ctn. Wt.	Cu. Ft.	Master
24	4.5 lbs.	.17	192



ASPIC CUTTER SET

No. 4848 / UPC 0 14963 04848 1

All cutters measure approximately 1"

Made of stainless steel.

Made in China.

Pack	Ctn. Wt.	Cu. Ft.	Master
24	5.8 lbs.	.23	192



ASPIC CUTTER SET

Made of tin.

Made in China.

No.	UPC	Size	Pack	Ctn Wt.	Cu. Ft.	Master
4846	0 14963 04846 7	.5"	24	2.5 lbs.	.08	384
4847	0 14963 04847 4	.75"	24	3.5 lbs.	.13	384



ALPHABET CUTTER SET

No. 6949 / UPC 0 14963 06949 3

Each cutter measures approximately 1".

Made of tin.

Made in China.

Pack	Ctn. Wt.	Cu. Ft.	Master
12	5.4 lbs.	.18	96

6 PIECE DOUBLE SIDED ROUND CUTTER SET

No. 14400 / UPC 0 14963 14400 8

Each cutter has a fluted side and a plain side.

Cutters range from 2" to 4.5" in diameter.

Made of stainless steel.

Made in China.

Pack	Ctn. Wt.	Cu. Ft.	Master
12	4.1 Lbs.	.35	72



3 PIECE RECTANGLE CUTTER SET

No. 5258 / UPC 0 14963 05258 7

Use to cut pastry, dough, or as a form for food.

Cutters range from 1.5" to 4.5" and measure 2" high.

Made of stainless steel.

Made in China.

Pack	Ctn. Wt.	Cu. Ft.	Master
12	3.8 Lbs.	.28	144



4 PIECE ROUND CUTTER SET

No. 1440 / UPC 0 14963 01440 0

Set contains: 1.5", 2.5", 3.5" and 4.5".

Cutters are 1.75" high.

Made of stainless steel.

Made in China.

Pack	Ctn. Wt.	Cu. Ft.	Master
12	4.2 Lbs.	.34	120

Also available individually:

No.	UPC	Size	Pack	Ctn. Wt.	Cu. Ft.
14401	0 14963 14401 5	1.5"	12	0.4 Lbs.	.04
14402	0 14963 14402 2	2.5"	12	0.8 Lbs.	.11
14403	0 14963 14403 9	3.5"	12	1.2 Lbs.	.20
14404	0 14963 14404 6	4.5"	12	1.6 Lbs.	.34
14406	0 14963 14406 0	6"	12	2.0 Lbs.	.54
14408	0 14963 14408 4	8"	6	1.9 Lbs.	.51



7 PIECE PLAIN TEARDROP CUTTER SET

No. 5266 / UPC 0 14963 05266 2

Cutters range from .5" to 2.75".

Cutters are .75" high.

Made of stainless steel.

Made in Indonesia.

Pack	Ctn. Wt.	Cu. Ft.	Master
12	1.3 Lbs.	.04	144



7 PIECE PLAIN COMMA CUTTER SET.

No. 5267 / UPC 0 14963 05267 9

Cutters range from .5" to 2.75".

Cutters are .75" high.

Made of stainless steel.

Made in Indonesia.

Pack	Ctn. Wt.	Cu. Ft.	Master
12	1.3 Lbs.	.04	144





5 PIECE DOUBLE SIDED ROUND SET

No. 14410 / UPC 0 14963 14410 7

Each cutter has a plain side and a fluted side.

Cutters range from 1.63" to 3" in diameter.

Made of stainless steel.

Made in China.

Pack	Ctn. Wt.	Cu. Ft.	Master
12	2.5 Lbs.	.15	72



6 PIECE DOUBLE SIDED SQUARE CUTTER SET

No. 52530 / UPC 0 14963 52530 2

Each cutter has a plain side and a fluted side.

Cutters range from 1.75" to 3.5" in length.

Made of stainless steel.

Made in China.

Pack	Ctn. Wt.	Cu. Ft.	Master
12	4.1 Lbs.	.35	48



4 PIECE FLUTED ROUND CUTTER SET

No. 1441 / UPC 0 14963 01441 7

Set contains: 1.5", 2.5", 3.5" and 4.5" diameter.

Cutters are 1.75" high.

Made of stainless steel.

Made in China.

Pack	Ctn. Wt.	Cu. Ft.	Master
12	4.0 Lbs.	.34	120

Also available individually:

No.	UPC	Size	Pack	Ctn. Wt.	Cu. Ft.
14411	0 14963 14411 4	1.5"	12	0.4 Lbs.	.04
14412	0 14963 14412 1	2.5"	12	0.8 Lbs.	.11
14413	0 14963 14413 8	3.5"	12	1.2 Lbs.	.20
14414	0 14963 14414 5	4.5"	12	1.6 Lbs.	.34
14416	0 14963 14416 9	6"	12	2.2 Lbs.	.54



7 PIECE FLUTED TEARDROP CUTTER SET

No. 5206 / UPC 0 14963 05206 8

Cutters range from .5" to 2.75".

Cutters are .75" high.

Made of stainless steel.

Made in Indonesia.

Pack	Ctn. Wt.	Cu. Ft.	Master
12	1.3 Lbs.	.04	144



7 PIECE FLUTED COMMA CUTTER SET

No. 5207 / UPC 0 14963 05207 5

Cutters range from .5" to 2.75".

Cutters are .75" high.

Made of stainless steel.

Made in Indonesia.

Pack	Ctn. Wt.	Cu. Ft.	Master
12	1.3 Lbs.	.04	144

9 PIECE PETIT FOUR CUTTER SET

No. 2009 / UPC 0 14963 02009 8

Use to make petit fours. Cutters measure approximately 1.25" diameter and 2" high.

Made of stainless steel.

Assembled in USA.

Cutters made in China.

Pack	Ctn. Wt.	Cu. Ft.	Master
12	6.5 Lbs.	.37	60

Also available individually:

No. 2000 Round	No. 2005 Rectangle
No. 2001 Half Circle	No. 2006 Diamond
No. 2002 Oval	No. 2007 Heart
No. 2003 Ellipse	No. 2008 Kidney
No. 2004 Square	



5 PIECE CHRISTMAS COOKIE CUTTERS

No. 4842 / UPC 0 14963 04842 9

Each cutter measures approximately 2.5"

Made of stainless steel.

Made in China.

Pack	Ctn. Wt.	Cu. Ft.	Master
10	2.6 Lbs.	.21	60



LINZER TART COOKIE CUTTER

No. 4844 / UPC 0 14963 04844 3

Makes 2" Linzer tart cookies.

Includes: 6 interchangeable center designs, complete instructions and recipe.

Made of stainless steel.

Made in China.

Pack	Ctn. Wt.	Cu. Ft.	Master
12	3.3 Lbs.	.46	144



DOUGHNUT CUTTERS

Cutters are 1.75" high.

Made of stainless steel.

Made in China.

No.	UPC	Size	Pack	Ctn. Wt.	Cu. Ft.	Master
14422	0 14963 14422 0	2.5"	12	1.4 Lbs.	.11	240
14423	0 14963 14423 7	3.5"	12	1.8 Lbs.	.20	240



DOUGHNUT STICKS

No. 1918

Use to remove doughnuts from hot oil.

Each stick measures 18" long.

Made of hardwood.

Made in USA.

Pack	Ctn. Wt.	Cu. Ft.
12	.6 Lbs.	.02





9 PIECE NUMBER CUTTER SET

No. 7803 / UPC 0 14963 07803 7
Each cutter measures approximately 3".
Made of stainless steel.
Made in China.

Pack	Ctn. Wt.	Cu. Ft.	Master
12	10.6 Lbs.	.46	72



26 PIECE ALPHABET COOKIE CUTTER SET

No. 6950 / UPC 0 14963 06950 9
Each letter measures approximately 3".
Made of stainless steel.
Made in China.

Pack	Ctn. Wt.	Cu. Ft.	Master
4	6.0 Lbs.	.52	24



6 PIECE TALL CUTTER SET

No. 1428 / UPC 0 14963 01428 8
Deep enough to cut fancy shaped finger sandwiches. Set contains: heart, club, diamond, spade, star and crescent.
Cutters are approximately 3" long x 3" high.
Made of stainless steel.
Made in China.

Pack	Ctn. Wt.	Cu. Ft.	Master
2	2.2 Lbs.	.2	36



JUMBO FRILL / RUFFLE CUTTER

No. 14428 / UPC 0 14963 14428 2
Make 2" frill or ruffle out of sugar paste or fondant to attach to cake for decoration.
Made of stainless steel.
Made in China.

Pack	Ctn. Wt.	Cu. Ft.	Master
12	6.5 Lbs.	1.01	48



8" SNOWFLAKE COOKIE CUTTER

No. 14429 / UPC 0 14963 14429 9
Made of stainless steel.
Made in China.

Pack	Ctn. Wt.	Cu. Ft.
6	2.8 Lbs.	.25

PLUNGER STYLE CUTTERS

Cut, emboss and press out sugar paste decorations.
Made of food grade plastic.
Made in China.

Pack	Ctn. Wt.	Cu. Ft.	Master
12	.9 Lbs.	.12	144

3 FLOWER CUTTERS

No. 1950 / UPC 0 14963 01950 4

Sizes: .88", 1.3" and 1.38"



3 DAISY CUTTERS

No. 1951 / UPC 0 14963 01951 1

Sizes: .88", 1.3" and 1.38"



3 LILY CUTTERS

No. 1952 / UPC 0 14963 01952 8

Sizes: .88", 1.25" and 1.5"



3 LEAF CUTTERS

No. 1953 / UPC 0 14963 01953 5

Sizes: .75", 1 " and 1.25"



3 CURVED LEAF CUTTERS

No. 1954 / UPC 0 14963 01954 2

Sizes: .88", 1.3" and 1.38"





3 LEAF CUTTERS

No. 1955 / UPC 0 14963 01955 9

Sizes: .88", 1.3" and 1.38"

Made of food grade plastic.

Made in China.

Pack	Ctn. Wt.	Cu. Ft.
12	.9 Lbs.	.12



3 ROSE CUTTERS

No. 1956 / UPC 0 14963 01956 6

Sizes: .75", 1.25" and 1.75"

Made of food grade plastic.

Made in China.

Pack	Ctn. Wt.	Cu. Ft.
12	1.1 Lbs.	.16



3 SIX PETAL FLOWER CUTTERS

No. 1957 / UPC 0 14963 01957 3

Sizes: .75", 1.25" and 1.75"

Made of food grade plastic.

Made in China.

Pack	Ctn. Wt.	Cu. Ft.
12	1.1 Lbs.	.16



3 STAR CUTTERS

No. 1958 / UPC 0 14963 01958 0

Sizes: .75", 1.25" and 1.75"

Made of food grade plastic.

Made in China.

Pack	Ctn. Wt.	Cu. Ft.
12	1.1 Lbs.	.16



3 CLOVER CUTTERS

No. 1940 / UPC 0 14963 01940 5

Sizes: .32", .44" and .57"

Made of food grade plastic.

Made in China.

Pack	Ctn. Wt.	Cu. Ft.
12	.5 Lbs.	.06



3 HEART CUTTERS

No. 1941 / UPC 0 14963 01941 2

Sizes: .32", .44" and .57"

Made of food grade plastic.

Made in China.

Pack	Ctn. Wt.	Cu. Ft.
12	.5 Lbs.	.06



2" SNOWFLAKE CUTTER

No. 1980 / UPC 0 14963 01980 1

Made of food grade plastic.

Made in China.

Pack	Ctn. Wt.	Cu. Ft.
12	.6 Lbs.	.10



2" STRAWBERRY CUTTER

No. 1981 / UPC 0 14963 01981 8

Made of food grade plastic.

Made in China.

Pack	Ctn. Wt.	Cu. Ft.
12	.6 Lbs.	.10



2" PINEAPPLE CUTTER

No. 1982 / UPC 0 14963 01982 5

Made of food grade plastic.

Made in China.

Pack	Ctn. Wt.	Cu. Ft.
12	.6 Lbs.	.10



2" LEAF CUTTER

No. 1983 / UPC 0 14963 01983 2

Made of food grade plastic.

Made in China.

Pack	Ctn. Wt.	Cu. Ft.
12	.6 Lbs.	.10





4 PIECE VALENTINE CUTTER SET

No. 1990 / UPC 0 14963 01990 0

Each cutter measures approximately 2".

Made of food grade plastic.

Made in China.

Pack	Ctn. Wt.	Cu. Ft.	Master
12	3.2 Lbs.	.50	96



4 PIECE EASTER CUTTER SET

No. 1991 / UPC 0 14963 01991 7

Each cutter measures approximately 2".

Made of food grade plastic.

Made in China.

Pack	Ctn. Wt.	Cu. Ft.	Master
12	3.2 Lbs.	.50	96



4 PIECE HALLOWEEN CUTTER SET

No. 1992 / UPC 0 14963 01992 4

Each cutter measures approximately 2".

Made of food grade plastic.

Made in China.

Pack	Ctn. Wt.	Cu. Ft.	Master
12	3.2 Lbs.	.50	96



4 PIECE CHRISTMAS CUTTER SET

No. 1993 / UPC 0 14963 01993 1

Each cutter measures approximately 2".

Made of food grade plastic.

Made in China.

Pack	Ctn. Wt.	Cu. Ft.	Master
12	3.2 Lbs.	.50	96



2 ROSE CUTTERS

No. 1481 / UPC 0 14963 01481 3

Cut and form roses using Ateco ball sculpturing tool (item # 4214).

Sizes: 3.2" and 4.5"

Made of polystyrene.

Made in Korea.

Pack	Ctn. Wt.	Cu. Ft.	Master
12	4.3 Lbs.	.57	96



PINWHEEL CUTTER

No. 1470 / UPC 0 14963 01470 7

Use to make pinwheel cookies. Instructions and recipes included.

Made of polystyrene.

Made in Korea.

Pack	Ctn. Wt.	Cu. Ft.	Master
12	2.1 Lbs.	.34	96



KAISER STAMP

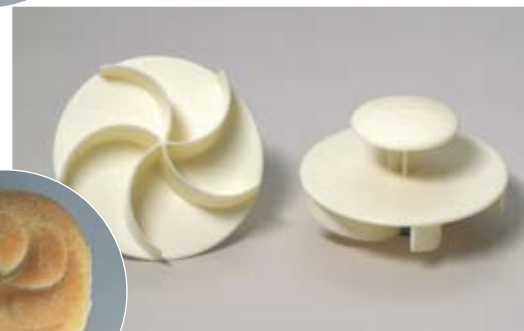
No. 1472 / UPC 0 14963 01472 1

Use to mark dough before baking so it may rise properly, forming a 4" kaiser roll.

Made of high impact plastic. **Now made of polystyrene blue material.**

Made in Korea.

Pack	Ctn. Wt.	Cu. Ft.	Master
12	2.2 Lbs.	.34	96



FOUR RING STAMP

No. 1473 / UPC 0 14963 01473 8

Use to mark the top of Mexican style sweet bread before baking.

Made of high impact plastic. **Now made of polystyrene blue material.**

Made in Korea.

Pack	Ctn. Wt.	Cu. Ft.	Master
12	2.2 Lbs.	.34	96



SPIRAL STAMP

No. 1474 / UPC 0 14963 01474 5

Use to mark the top of Mexican style sweet bread before baking.

Made of polystyrene.

Made in Korea.

Pack	Ctn. Wt.	Cu. Ft.	Master
12	2.2 Lbs.	.34	96



WAFFLE DESIGN STAMP

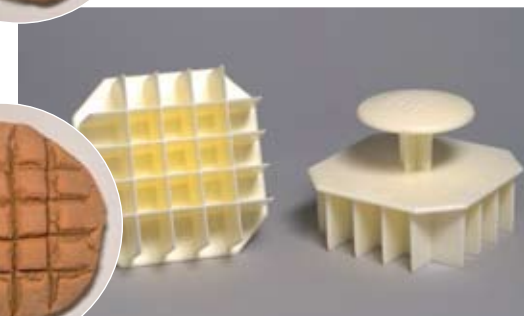
No. 1475 / UPC 0 14963 01475 2

Use to mark the top of Mexican style sweet bread before baking.

Made of high impact plastic. **Now made of polystyrene blue material.**

Made in Korea.

Pack	Ctn. Wt.	Cu. Ft.	Master
12	2.2 Lbs.	.34	96





ULTRA SPATULAS

Stainless steel blades, and polypropylene handles that are dishwasher safe, shock resistant and sanitary. Spatula blades are taper ground for even flexibility.

Made in Japan.

LARGE SIZED STRAIGHT SPATULAS

No.	UPC	Blade Dimensions	Pack	Ctn. Wt.	Cu. Ft.	Master
1310	0 14963 01310 6	10" x 1.5"	12	3.4 Lbs.	.08	120
1312	0 14963 01312 0	12" x 1.75"	12	4.2 Lbs.	.09	120
1314	0 14963 01314 4	14" x 2"	12	5.2 Lbs.	.10	120



MEDIUM SIZED OFFSET SPATULAS

No.	UPC	Blade Dimensions	Pack	Ctn. Wt.	Cu. Ft.	Master
1307	0 14963 01307 6	7.75" x 1.25"	12	2.6 Lbs.	.10	120
1309	0 14963 01309 0	9.75" x 1.5"	12	3.4 Lbs.	.12	120



MEDIUM SIZED STRAIGHT SPATULAS

No.	UPC	Blade Dimensions	Pack	Ctn. Wt.	Cu. Ft.	Master
1306	0 14963 01306 9	6" x 1.5"	12	2.6 Lbs.	.06	120
1308	0 14963 01308 3	8" x 1.25"	12	2.8 Lbs.	.07	120



SMALL SIZED SPATULAS

No.	UPC	Blade Dimensions	Pack	Ctn. Wt.	Cu. Ft.	Master
1317	0 14963 01317 5	4.75" x .75"	12	.8 Lbs.	.04	120
1305	0 14963 01304 5	4.25" x .75"	12	.8 Lbs.	.02	120
1304	0 14963 01305 2	4 .5" x .75"	12	.8 Lbs.	.04	120



PASTRY SCRAPER

No.	UPC	Blade Dimensions	Pack	Ctn. Wt.	Cu. Ft.	Master
1319	0 14963 01319 4	.75" x 4"	12	.4 Lbs.	.09	120



All Items on this page and page 45 are available with or without hang tabs.



NATURAL WOOD HANDLED SPATULAS

Feature stainless steel blades. Blades are taper ground for even flexibility. Made in Japan.

LARGE SIZED STRAIGHT SPATULAS

No.	UPC	Blade Dimensions	Pack	Ctn. Wt.	Cu. Ft.	Master
1375	0 14963 01375 5	10" x 1.5"	12	3.4 Lbs.	.06	120
1376	0 14963 01376 2	14" x 2"	12	5.0 Lbs.	.08	120



MEDIUM SIZED OFFSET SPATULAS

No.	UPC	Blade Dimensions	Pack	Ctn. Wt.	Cu. Ft.	Master
1387	0 14963 01387 8	7.63" x 1.25"	12	2.2 Lbs.	.08	120
1389	0 14963 01389 2	9.75" x 1.5"	12	3.4 Lbs.	.10	120



MEDIUM SIZED STRAIGHT SPATULAS

No.	UPC	Blade Dimensions	Pack	Ctn. Wt.	Cu. Ft.	Master
1386	0 14963 01386 1	6" x 1.25"	12	2.2 Lbs.	.04	120
1388	0 14963 01388 5	8" x 1.25"	12	2.4 Lbs.	.04	120



SMALL SIZED SPATULAS

No.	UPC	Blade Dimensions	Pack	Ctn. Wt.	Cu. Ft.	Master
1385	0 14963 01385 4	4.5" x .75"	12	.8 Lbs.	.03	120
1384	0 14963 01384 7	4.25" x .75"	12	.8 Lbs.	.02	120



SMALL SIZED TAPERED OFFSET SPATULA

No.	UPC	Blade Dimensions	Pack	Ctn. Wt.	Cu. Ft.	Master
1383	0 14963 01383 0	5" x .75"	12	.8 Lbs.	.03	120

Polyoxymethylene Thermoplastic (POM) Handled Spatulas Combine the feel of wood with the easy care of plastic. Dishwasher safe. Rivets and blades are made with 420 grade stainless steel.

STRAIGHT SPATULAS WITH POM HANDLES

Made in Japan.

Assembled in China. **Now available only in white handle.**

No.	UPC	Blade Dimensions	Pack	Ctn. Wt.	Cu. Ft.	Master
1366	0 14963 01366 3	6" x 1.5"	12	2.6 Lbs.	.06	120
1370	0 14963 01370 0	9.75" x 1.38"	12	3.0 Lbs.	.08	120



COOKIE AND OFFSET SPATULAS WITH POM HANDLES

Made in Japan.

Assembled in China.

No.	UPC	Blade Dimensions	Pack	Ctn. Wt.	Cu. Ft.	Master
1365	0 14963 01365 6	6" x 2.5"	12	3.2 Lbs.	.14	120
1369	0 41963 01369 4	9.75" x 1.25"	12	3.0 Lbs.	.12	120



BROWNIE AND SLOTTED SPATULAS WITH POM HANDLES

Made in China.

No.	UPC	Blade Dimensions	Pack	Ctn. Wt.	Cu. Ft.	Master
1367	0 14963 01367 0	4" x 2"	12	2.8 Lbs.	.05	120
1364	0 14963 01364 9	6.5" x 3"	12	2.4 Lbs.	.06	120



PIE SPATULA

No. 1350 / UPC 0 14963 01350 2

Pointed end makes this spatula perfect for removing brownies, cakes, pies, and quiches from their pans.

Packaged in USA.

Made of stainless steel.

Made in China.

Pack	Ctn. Wt.	Cu. Ft.
12	2.4 Lbs.	.29

COOKIE SPATULA

No. 1352 / UPC 0 14963 01352 6

Super flexible blade makes this spatula perfect for removing cookies from a cookie sheet.

Packaged in USA.

Made of stainless steel.

Made in China.

Pack	Ctn. Wt.	Cu. Ft.
12	2.4 Lbs.	.29



OFFSET SPATULAS WITH NON-SLIP TEXTURED HANDLES

Ideal for fine detail work like fondant.

Made of stainless steel blade and plastic handle.

Made in Italy.

No.	UPC	Blade Dimensions	Pack	Ctn. Wt.	Cu. Ft.
1363	0 14963 01363 2	2.9" x .5"	12	.8 Lbs.	.03
1361	0 14963 01361 8	2.4" x .75"	12	.8 Lbs.	.03
1359	0 14963 01359 5	2.1" x .87"	12	.8 Lbs.	.03





BENCH SCRAPERS

Use to cut or divide dough. Also used to scrape excess flour off work bench.

Both models have stainless steel blades. No 1371 has Polyoxymethylene Thermoplastic (POM) handle and stainless steel rivets.

No.	UPC	Blade dimensions	Pack	Ctn. Wt.	Cu. Ft.	Country of origin	Master
1300	0 14963 01300 7	4" x 3"	12	3.8 Lbs.	.10	Japan	120
1371	0 14963 01371 7	5.9" x 3"	12	6.6 Lbs.	.10	China	120



BENCH SCRAPERS

Use to cut or divide dough. Also use to scrape excess flour and dough from work bench.

Both models have stainless steel blades.

Made in China.

No.	UPC	Handle	Blade Dimension	Pack	Ctn. Wt.	Cu. Ft.	Master
1318	0 14963 01318 2	Plastic	5.88" x 3"	12	5.4 Lbs.	.11	120
1372	0 14963 01372 4	Wood	5.88" x 3"	12	4.4 Lbs.	.07	120



CAKE KNIVES

Handles made of polypropylene.

Blades made of stainless steel.

Made in Japan.

No.	UPC	Blade Dimensions	Pack	Ctn. Wt.	Cu. Ft.	Master
1316	0 14963 01316 6	14"	6	2.6 Lbs.	.1	60
1315	0 14963 01315 5	10"	6	1.8 Lbs.	.05	60



CHOCOLATE SHAVER

No. 1345 / UPC 0 14963 01345 8

Shred chocolate. Use blade adjustment screw to control thickness of chocolate slices.

Also, use for mushrooms and parmesan cheese.

Made of stainless steel.

Made in China.

Pack	Ctn. Wt.	Cu. Ft.
12	3.4 Lbs.	.12



PIE CRIMPER

No. 4204 / UPC 0 14963 04204 5

Seal or join various doughs that have filling on the inside.

Great for pie crusts or pastries.

4" long.

Made of stainless steel.

Made in Indonesia.

Pack	Ctn. Wt.	Cu. Ft.
360	25.4 Lbs.	.5

TWEEZERS

No. 4208 / UPC 0 14963 04208 3

Use to place dragees on cake or cupcakes.

Also use to place flowers or other sugar paste decorations on cakes.

Made of stainless steel.

Made in China.

Pack	Ctn. Wt.	Cu. Ft.
12	.4 Lbs	.02

MULTI-WHEEL CUTTERS

Save time when cutting brownies, cookies, cake and pastry or pasta dough. All Ateco multi-wheel cutters feature a locking device to insure even cuts and uniform portions. To use, loosen wing nut and adjust outer rods until the wheels are at the desired spacing. Then tighten wing nut. Opens to 4 .9" between wheels. Made of stainless steel. Made in Korea.



5 WHEEL CUTTER

No. 13955 / UPC 0 1463 13955 4 (2 1/8" diameter wheels)

Pack	Ct. Wt.	Cu. Ft.
1	1.6 Lbs.	.07

6 WHEEL CUTTER

No. 13956 / UPC 0 14963 13956 1 (2 1/8" diameter wheels)

Pack	Ct. Wt.	Cu.ft.
1	1.8 Lbs.	.07



7 WHEEL CUTTER

No. 13957 / UPC 0 1463 13957 8 (2 1/8" diameter wheels)

Pack	Ct. Wt.	Cu.ft.
1	2.0 Lbs.	.07



6 WHEEL CUTTER

No. 13966 / UPC 0 14963 13966 0 (4" diameter wheels)

Pack	Ct. Wt.	Cu.ft.
1	2.6 Lbs.	.07



12 WHEEL CUTTER

No. 13967 / UPC 0 14963 13967 7 (2 1/8" diameter wheels)
Plain and fluted wheels.

Pack	Ct. Wt.	Cu.ft.
1	1.8 Lbs.	.04





CROISSANT ROLLER CUTTER

No. 18405 / UPC 0 14963 18405 9

The efficient and effective way to manually cut dough in the shape of a croissant.

Makes six croissants per revolution. Stainless steel cutting area revolves independently of polypropylene handles. Cuts triangles with a 3.75" base x 8.25" length.

Made of stainless steel and polypropylene handles.

Made in Indonesia.

Pack	Ctn. Wt.	Cu. Ft.	Master
1	1.3 Lbs.	.17	20



PASTRY WHEEL

Use to cut dough, pastry and other foods. Plastic handles are dishwasher safe, shock resistant and sanitary. Heavy duty construction.

Blades are made of stainless steel.

Made in Japan.

No.	UPC	Diameter of blade	Pack	Ctn.Wt.	Cu. Ft.	Master
1324	0 14963 01324 3	4"	6	2.4 Lbs.	.14	120
1322	0 14963 01322 9	2.5"	12	3.8 Lbs.	.16	120



FLUTED PASTRY WHEEL

No. 1323 / UPC 0 14963 01323 6

Use to cut dough, pastry and other foods. Made with

high impact plastic handle and 2.5" diameter stainless steel blade.

Made in Japan.

Pack	Ctn. Wt.	Cu. Ft.	Master
12	3.4 Lbs.	.12	120



PASTRY WHEEL

Use to cut dough, pastry and other foods.

Both cutters have wood handle and stainless steel blade.

Made in Japan.

No.	UPC	Diameter of blade	Pack	Ctn.Wt.	Cu. Ft.	Master
1394	0 14963 01394 6	4"	12	4.2 Lbs.	.27	120
1392	0 14963 01392 2	2.5"	12	2.2 Lbs.	.12	120



FLUTED PASTRY WHEEL

Use to cut dough, pastry and other foods. Each cutter has a 1.38" stainless steel blade.

Made in Japan.

No.	Handle	Pack	Ctn.Wt.	Cu. Ft.	Master
1397	wood	12	.8 Lbs.	.02	240
1398	all stainless steel	12	.4 Lbs.	.01	600

DECORATING COMB AND ICING SMOOTHER

No. 1447 / UPC 0 14963 01447 9

Use to create designs on the side or top of cakes. Also use to smooth icing in preparation for decorating.

Made of aluminum.

Made in USA.

UNCARDED

No. 14471

Pack	Ctn. Wt.	Cu. Ft.
12	1.2 Lbs.	.03

Pack	Ctn. Wt.	Cu. Ft.
100	6.5 Lbs.	.08



DECORATING COMB

No. 1446 / UPC 0 14963 01446 2

A quick and easy way to decorate cakes.

Made of aluminum.

Made in USA.

UNCARDED

No. 14461

Pack	Ctn. Wt.	Cu. Ft.
12	.6 Lbs.	.02

Pack	Ctn. Wt.	Cu. Ft.
100	2.8 Lbs.	.04



CAKE TESTER

No. 1445 / UPC 0 14963 01445 5

Use to check cakes for doneness.

Made of stainless steel wire and polypropylene.

Made in Korea.

Pack	Ctn. Wt.	Cu. Ft.
12	.18 Lbs.	.015



FONDANT SMOOTHER

No. 1313 / UPC 0 14963 01313 7

Use to smooth imperfections out of rolled fondant, after the fondant is placed on the cake.

Made of stainless steel.

Made in China.

Pack	Ctn. Wt.	Cu. Ft.
12	2.6 Lbs.	.14



LABELING SPEARS / 4 PIECES

No. 1444 / UPC 0 14963 01444 8

Label or price foods. Communicate a message.

Made of stainless steel.

Made in China.

Pack	Ctn. Wt.	Cu. Ft.	Master
12	.75 Lbs.	.14	72





ROLLING CIRCLE CUTTER

No. 1355 / UPC 0 14963 01355 7

Saves time when cutting 2.5" continuous circles.

Make perogies, cookies or biscuits.

Made of stainless steel and silicone handle.

Made in China.

Pack	Ctn. Wt.	Cu. ft.
12	2.3 Lbs.	.22



HEXAGON CUTTER

No. 5151 / UPC 0 14963 05151 5

Cuts six at a time and eliminates waste. Great for cutting trays of biscuits, pastries, or cookies.

Each hexagon measures 2.6".

Made of stainless steel.

Made in China.

Pack	Ctn. Wt.	Cu. Ft.
12	3.2 Lbs.	.36



WAFER LEAF STENCILS

No. 1390 (One Leaf) No. 1391 (Two Leaves)

Use to make wafer leaf cookies. Also can be used as a stencil with confectioners sugar to make leaf impressions.

Made of aluminum.

Made in USA.

Pack	Ctn. Wt.	Cu. Ft.
12	1.4 Lbs.	.47



4 OZ. SHAKER

No. 1347 / UPC 0 14963 01347 2

Use to sprinkle corn starch or confectioners sugar over rolled fondant or non-slip mat. Fine mesh top delivers a light dusting.

Made of stainless steel.

Made in China.

Pack	Ctn. Wt.	Cu. Ft.
12	2.2 Lbs.	.13



10 OZ. SHAKERS WITH PLASTIC COVERS

Made of stainless steel.

Made in China.

No.	UPC	Lid Style	Pack	Ctn. Wt.	Cu. Ft.
1348	0 14963 01348 9	Mesh	12	4.1 Lbs.	.31
1351	0 14963 01351 9	Large holes	12	3.9 Lbs.	.31
1349	0 14963 01349 6	Fine holes	12	4.0 Lbs.	.31

LARGE BOWL SCRAPER

No. 1320 / UPC 0 14963 01320 5

Bowl scraper lets you easily transfer batter, icing or dough from bowl to work surface or decorating bag quicker.

Also can be used as smoother.

Measures 7.5" x 4.75".

Made of plastic.

Made in Korea.

Pack	Ctn. Wt.	Cu. Ft.
12	1.1 Lbs.	.03



BOWL SCRAPER/SPATULA

No. 1311 / UPC 0 14963 01311 3

Measures 5.25" x 3.5".

Made of food grade plastic.

Made in Korea.

Pack	Ctn. Wt.	Cu. Ft.
12	1.2 Lbs.	.06



BOWL SCRAPER

No. 1303

Measures 5.25" x 3.5"

Made of flexible plastic.

Made in Korea.

Pack	Ctn. Wt.	Cu. Ft.
25	1.2 Lbs.	.02



FONDANT SMOOTHER

No. 1302 / UPC 0 14963 01302 1

Used to smooth imperfections out of rolled fondant, after the fondant is placed on the cake.

Made of plastic.

Made in China.

Pack	Ctn. Wt.	Cu. Ft.
12	.9 Lbs.	.14



CAKE COVER

No. 618

Use to cover and display cakes. Can be used with all Ateco round revolving cake stands on page 10. 12" diameter. 5" high.

Made of high impact plastic.

Made in USA.

Pack	Ctn. Wt.	Cu. Ft.
1	.9 Lbs.	.58





2 SIDED CAKE MARKER

No.1327 / UPC 0 14963 01327 4

Pre-mark cut lines in cakes to insure equal portions.

10.5" diameter. Use on cakes up to 16" round.

10 or 12 slices.

Made of Food grade plastic.

Made in China.

Pack	Ctn. Wt.	Cu ft.	Master
12	6 Lbs.	.98	12

*See page 58 for Lady Mary Cake Boards.



2 SIDED CAKE MARKER

No.1328 / UPC 0 14963 01328 1

Pre-mark cut lines in cakes to insure equal portions.

10.5" diameter. Use on cakes up to 16" round.

14 or 16 slices.

Made of food grade plastic.

Made in China.

Pack	Ctn. Wt.	Cu ft.	Master
12	6 Lbs.	.98	12

*See page 58 for Lady Mary Cake Boards.



LATTICE DOUGH CUTTER

No. 1354 / UPC 0 14963 01354 0

Simply depress cutter over rolled out dough to create a lattice design to be placed over pies or other pastries.

Measures 5" wide.

Made of high impact plastic.

Made in China.

Pack	Ctn. Wt.	Cu. Ft.	Master
6	2.8 Lbs.	.32	72



DOUGH DOCKER

No. 1357 / UPC 0 14963 01357 1

Depress dough docker over dough to minimize the dough from rising.

Measures 5" wide.

Made of high impact plastic.

Made in China.

Pack	Ctn. Wt.	Cu. Ft.	Master
6	2.4 Lbs.	.39	72



BEAR CLAW

No. 1358

Use to make bear claw pastries.

Measures 2.5" wide.

Made of high impact plastic.

Made in China.

Pack	Ctn. Wt.	Cu. Ft.
1	.1 Lbs.	.02

ROUND PANS WITH REMOVABLE BOTTOMS

Simplifies removing contents from pan. Professional quality (16 gauge).

Made of aluminum.

Made in China.

No.	UPC	Dia.	Ht.	Pack	Ctn. Wt.	Cu.Ft.	Master
12063	0 14963 12063 7	6"	3"	12	7.0 Lbs.	1.10	48
12083	0 14963 12083 5	8"	3"	06	5.6 Lbs.	1.10	36
12092*	0 14963 12092 9	9"	2"	06	5.2 Lbs.	0.96	*Fixed Bottom



RECTANGULAR CAKE PANS

Commercial quality and weight (14 gauge).

Made of aluminum.

Made in China.

No.	UPC	L	W	H	Pack	Ctn. Wt.	Cu.Ft.
12812	0 14963 12812 1	12"	8"	3"	6	9.4 Lbs.	1.5
12913	0 14963 12913 5	13"	9"	2"	6	9.0 Lbs.	1.2
12180	0 14963 12180 1	18"	12"	2"	6	10.8 Lbs.	2.1



SQUARE CAKE PANS

Commercial quality and weight (14 gauge).

Made of aluminum.

Made in China.

No.	UPC	L	W	H	Pack	Ctn. Wt.	Cu. Ft.
12066	0 14963 12066 8	6"	6"	3"	6	4.6 Lbs.	.59
12088	0 14963 12088 0	8"	8"	3"	6	7.0 Lbs.	1.07
12010	0 14963 12010 1	10"	10"	3"	6	9.6 Lbs.	1.51
12012	0 14963 12012 5	12"	12"	3"	6	12.2 Lbs.	1.96



4 HEATING CORES

No. 1449/UPC 0 14963 01449 3

Help cook the middle of cakes. Conducts heat into batter so cakes bake and rise evenly.

Made of stainless steel.

Made in China.

Pack	Ctn. Wt.	Cu. Ft.
12	1.2 Lbs.	.11



PAPER PAN LINER

Use to line pans or baking sheets to minimize cleanup. Also use to cover food going into the microwave to eliminate splattering.

Made of silicone treated paper.

Made in USA.

No. 440 / UPC 0 14963 00440 1
Roll size: 16.5 ft. x 15 in. (20 sq. ft.)

Pack	Ctn. Wt.	Cu. Ft.
24	8.5 Lbs.	.83

No. 441 / UPC 0 14963 00441 8
Roll size: 33 ft. x 15 in. (40 sq. ft.)

Pack	Ctn. Wt.	Cu. Ft.
24	13.3 Lbs.	.83





COMPOSITE FERRULE PASTRY BRUSHES

Constructed of white natural boar bristle, epoxy set in a composite ferrule with a wood handle.
Made in China.

No.	UPC	Width	Pack	Ctn Wt.	Cu. Ft.	Master
60210	0 14963 60210 2	1"	12	0.8 Lbs.	.05	120
60215	0 14963 60215 7	1.5"	12	1.0 Lbs.	.09	120
60220	0 14963 60220 1	2"	12	1.4 Lbs.	.10	120
60230	0 14963 60230 0	3"	12	2.6 Lbs.	.17	120
60240	0 14963 60240 9	4"	12	3.6 Lbs.	.28	120

No.	UPC	Diameter	Pack	Ctn Wt.	Cu. Ft.	Master
60250	0 14963 60250 8	1"	12	2.1 Lbs.	.12	120



BLACK BOAR BRISTLE PASTRY BRUSHES

Constructed of natural boar bristle, epoxy set in a stainless steel ferrule with a lacquered wood handle.

Stainless steel ferrules withstand heat better than plastic or composite ferrules.

Made in USA.

No.	UPC	Width	Pack	Ctn Wt.	Cu. Ft.	Master
60510	0 14963 60510 3	1"	12	1.0 Lbs.	.05	120
60515	0 14963 60515 8	1.5"	12	1.4 Lbs.	.10	120
60520	0 14963 60520 2	2"	12	1.8 Lbs.	.10	120
60525	0 14963 60525 7	2.5"	12	2.8 Lbs.	.11	120
60530	0 14963 60530 1	3"	12	3.0 Lbs.	.17	120
60540	0 14963 60540 0	4"	12	5.0 Lbs.	.28	120

No.	UPC	Diameter	Pack	Ctn Wt.	Cu. Ft.	Master
62000	0 14963 62000 7	1.06"	12	2.4 Lbs.	.13	120



WHITE BOAR BRISTLE PASTRY BRUSHES

Constructed of natural boar bristle, epoxy set in a stainless steel ferrule with a lacquered wood handle. Stainless steel ferrules withstand heat better than plastic or composite ferrules.

Made in USA.

No.	UPC	Width	Pack	Ctn Wt.	Cu. Ft.	Master
60010	0 14963 60010 8	1"	12	1.0 Lbs.	.05	120
60015	0 14963 60015 3	1.5"	12	1.6 Lbs.	.10	120
60020	0 14963 60020 7	2"	12	2.0 Lbs.	.10	120
60025	0 14963 60025 2	2.5"	12	2.8 Lbs.	.11	120
60030	0 14963 60030 6	3"	12	3.2 Lbs.	.17	120
60040	0 14963 60040 5	4"	12	5.4 Lbs.	.28	120

No.	UPC	Diameter	Pack	Ctn Wt.	Cu. Ft.	Master
60200	0 14963 60200 3	.38"	12	1.0 Lbs.	.07	120
61000	0 14963 61000 8	1.06"	12	2.2 Lbs.	.13	120
61200	0 14963 61200 2	1.25"	12	3.0 Lbs.	.13	120



EPOXY FUSED PASTRY BRUSHES

The most sanitary brushes available. Constructed of white boar bristle epoxy fused into a molded plastic handle.

Made In USA.

No.	Width	Pack	Ctn Wt.	Cu. Ft.	Master
1672	2"	1	.1 Lbs.	.01	120
1673	3"	1	.1 Lbs.	.02	120
1674	4"	1	.1 Lbs.	.02	120

No.	Diameter	Pack	Ctn Wt.	Cu. Ft.	Master
1680	1"	1	.1 Lbs.	.01	120
1682	1.25"	1	.1 Lbs.	.01	120



TUBE CLEANING BRUSH

No. 1661 / UPC 0 14963 01661 9

Special two sided brush design cleans both small and large cake decorating tubes.

Made of stainless steel and nylon.

Made in China.

Pack	Ctn. Wt.	Cu. Ft.
12	.1 Lbs.	.01

4 PIECE BRUSH SET

No. 1604 / UPC 0 14963 01604 6

Ideal for applying color to gum paste or luster dust figures and other fine detail work.

Sable bristle.

Rust resistant ferrule.

Made in Thailand.

Pack	Ctn. Wt.	Cu. Ft.
150	7.4 Lbs.	.34





Brushes on this page are manufactured using a technique known as epoxy fusing. The process involves immersing brush tufts into molten epoxy. When epoxy hardens a solid block forms that secures bristle and makes the brush impervious to moisture. All blocks and handles are made of molded high impact plastic. Made in USA.

BENCH BRUSHES

Dimensions 1.75" x 9.5"

Bristle Length 2.75"

No.	Bristle	Pack	Ctn. Wt.	Cu. Ft.
1628	Natural White	1	.6 Lbs.	.05
1648	White Nylon	1	.6 Lbs.	.05



ICING BRUSH

Brush Head 1.75" x 4"

Overall Length 11.25" Bristle Length 2.25"

No.	Bristle	Pack	Ctn. Wt.	Cu. Ft.
1624	Natural White	1	.6 Lbs.	.05



COUNTER DUSTER

Brush Head 1.63" x 8"

Overall Length 13.63"

Bristle Length 2.75"

No.	Bristle	Pack	Ctn. Wt.	Cu. Ft.
1646	White Nylon	1	.8 Lbs.	.05



WATER BRUSH

Brush Head 1.88"x 5.25"

Overall Length 11.75"

Bristle Length 2.75"

No.	Bristle	Pack	Ctn. Wt.	Cu. Ft.
1625	Natural White	1	.6 Lbs.	.05



UTILITY BRUSH

Brush Head 5"x 5" Overall Length 9" Bristle Length 2"

No.	Bristle	Pack	Ctn. Wt.	Cu. Ft.
1647	White Nylon	1	.6 Lbs.	.08

MUFFIN PAN CLEANING BRUSH

No. 1659

Brush Head 2" Diameter.

Nylon bristle is stiff enough to remove baked on batter, but will not damage non-stick coating. Made in USA.

Pack	Ctn. Wt.	Cu. Ft.
1	.3 Lbs.	.03

ROUND BOARDS, WHITE RIBBON, BOX OF SIX

Item	Outer Dia.	Usable Dia.	UPC
30008	8"	6"	0 14963 30008 4
30010	10"	8"	0 14963 30010 7
30012	12"	10"	0 14963 30012 1
30014	14"	12"	0 14963 30014 5
30016	16"	13"	0 14963 30016 9
30018	18"	15"	0 14963 30018 3



SQUARE BOARDS, WHITE RIBBON, BOX OF SIX

Item	Outer Dimensions	Usable Dimensions	UPC
31010	10" x 10"	8" x 8"	0 14963 31010 6
31012	12" x 12"	10" x 10"	0 14963 31012 0
31014	14" x 14"	12" x 12"	0 14963 31014 4



RECTANGLE BOARDS, WHITE RIBBON, BOX OF SIX

Item	Outer Dimensions	Usable Dimensions	UPC
31115	11" x 15"	9" x 13"	0 14963 31115 8
31519	15" x 19"	12" x 16"	0 14963 31519 4



HEART BOARDS, WHITE RIBBON, BOX OF SIX

Item	Length(side to Side widest point)	Usable Length	UPC
32012	12"	10"	0 14963 32012 9
32014	14"	12"	0 14963 32014 3
32016	16"	13"	0 14963 32016 7



LADY MARY SEPARATOR PLATES AND DOWELS

Provide sturdy platforms for multi tiered cakes. Plates are durable, reuseable and fit tightly to the parchment coated paperboard dowels

Separator Plates - 2 Pack			Dowels - 12 Pack			
Item	Diameter	UPC	Item	Length	Diameter	UPC
33006	6"	0 14963 33006 7	34004	4"	.5"	0 14963 34004 2
33008	8"	0 14963 33008 1	34045	4.5"	.5"	0 14963 34045 5
33010	10"	0 14963 33010 4	34007	7.25"	.5"	0 14963 34007 3
33012	12"	0 14963 33012 8	34010	10"	.5"	0 14963 34010 3
33004	One of each of the above	0 14963 33004 3	34012	12"	.5"	0 14963 34012 7





DISTINCTIVE CAKE BOARDS

Look like doilies, work like cake boards. Made of thick paperboard coated with gold polypropylene. Made in Italy.

1808	Inner Diameter 8"	1810	Inner Diameter 10"	1813	Inner Dimensions 8" x 13"
Pack	Ctn. Wt. Cu. Ft.	Pack	Ctn. Wt. Cu. Ft.	Pack	Ctn. Wt. Cu. Ft.
12	2.4 Lbs. .06	12	3.0 Lbs. .08	12	5.6 Lbs. .10
		(Not Shown)			



GOLD AND SILVER PAPER-LINED FOIL BAKING CUPS

200 Cups per package. Ovenable and grease proof.

Made in USA.

	No.	UPC		No.	UPC		No.	UPC
Gold	6401 / 0	14963 06401 6	6421 / 0	14963 06421 4	6431 / 0	14963 06431 3		
Silver	6432 / 0	14963 06432 0						
Size	1" Base X .75" Wall		1.75" Base X 1" Wall		1.94" Base X 1.25" Wall			
Pack	Ctn. Wt.	Cu. Ft.	Pack	Ctn. Wt.	Cu. Ft.	Pack	Ctn. Wt.	Cu. Ft.
12	2.2 Lbs.	.09	12	2.8 Lbs.	.18	12	3.6 Lbs.	.39



ORANGE STRIPE AND BLUE STRIPE PAPER BAKING CUPS

200 Cups per package. Ovenable and grease proof.

Made in Italy.

Packaged in USA

	No.	UPC		No.	UPC
Orange	6406 / 0	14963 06406 1	6436 / 0	14963 06436 8	
Blue	6408 / 0	14963 06408 5	6438 / 0	14963 06438 2	
Size	1" Base X .75" Wall		1.94" Base X 1.25" Wall		
Pack	Ctn. Wt.	Cu. Ft.	Pack	Ctn. Wt.	Cu. Ft.
12	2.2 Lbs.	.09	12	2.8 Lbs.	.18



BURGUNDY STRIPE AND GOLD STRIPE PAPER BAKING CUPS

200 Cups per package. Ovenable and grease proof.

Made in Italy.

Packaged in USA.

	No.	UPC		No.	UPC
Burgundy	64011 / 0	14963 64011 1	64311 / 0	14963 64311 2	
Gold	6409 / 0	14963 06409 2	6439 / 0	14963 06439 9	
Size	1" Base X .75" Wall		1.94" Base X 1.25" Wall		
Pack	Ctn. Wt.	Cu. Ft.	Pack	Ctn. Wt.	Cu. Ft.
12	2.2 Lbs.	.09	12	2.8 Lbs.	.18



HALLOWEEN, WHITE AND HOLLY DRY WAX PAPER BAKING CUPS

200 Cups per package. Ovenable and grease proof.

Made in USA.

	No.	UPC		No.	UPC		No.	UPC
Halloween	6407 / 0	14963 06407 8	6427 / 0	14963 06427 6	6437 / 0	14963 06437 5		
White	6403 / 0	14963 06403 0	6423 / 0	14963 06423 8	6433 / 0	14963 06433 7		
Holly	6405 / 0	14963 06405 4	6425 / 0	14963 06425 2	6435 / 0	14963 06435 1		
Size	1" Base X .75" Wall		1.75" Base X 1" Wall		1.94" Base X 1.25" Wall			
Pack	Ctn. Wt.	Cu. Ft.	Pack	Ctn. Wt.	Cu. Ft.	Pack	Ctn. Wt.	Cu. Ft.
12	2.2 Lbs.	.09	12	2.8 Lbs.	.18	12	3.6 Lbs.	.39





GEL COLORS

Gel has a viscosity that offer the convenience of a pourable product, and makes it easy to duplicate shades.

Gel color will not breakdown buttercream or non dairy icings like conventional liquid colors.

Prefix	Size	Pack	Ctn. Wt.	Cu. Ft.
101	.75 oz.	12	00.8 Lbs.	0.02
102	4.5 oz.	12	04.4 Lbs.	0.12
104	13.5 oz.	12	11.6 Lbs.	0.3
107	1 Gal.	4	37.6 Lbs.	1.1

STACKABLE COLOR RACK

Use to stock and merchandise .75 oz. gel or .65 oz. airbrush color. Each layer holds 12 dozen bottles.



CANDY COLOR

Oil based food color specifically made to blend with chocolate and other oil based foods. Colors available: 01, 02, 07, 11, 13, 14, 20, 22, and 34.

Flo-Coat

No. 10500 / UPC 0 14963 10500 9

Allows any gel color to mix properly with oil based foods like chocolate. Eliminates the need for purchasing candy color separately.

Prefix	Size	Pack	Ctn. Wt.	Cu. Ft.
105	2.0 oz.	12	2.3 Lbs.	.08

SPRAY COLOR

Food color in a convenient non flammable aerosol can.

Colors available: 01, 02, 07, 11, 13, 14, 20, 22, 31, 70, 71, 72. Surface shipping only.

Prefix	Size	Pack	Ctn. Wt.	Cu. Ft.
109	2.75 oz.	12	2.8 Lbs.	.28

AIRBRUSH COLORS

Formulated with the necessary dye concentration levels needed to achieve the most vibrant and brilliant colors available. Made specifically for airbrush applications.

Prefix	Size	Pack	Ctn. Wt.	Cu. Ft.
103	.65 oz.	12	.7 Lbs.	.02
106	9.0 oz.	12	8.0 Lbs.	.2

Sheen Airbrush Colors

Reflective metallic colors add glamour and turn ordinary cakes into stunning cakes. Use on butter cream, non dairy icing or fondant.



COLORS	
SUPER BLACK	01
ROYAL BLUE	02
SKY BLUE	03
CHOCOLATE BRN	04
COPPER	05
EGG YELLOW	06
LEMON YELLOW	07
IVORY	08
FOREST GREEN	09
TEAL	10
LEAF GREEN	11
MINT GREEN	12
ORANGE	13
DEEP PINK	14
DUSTY ROSE	15
MAUVE	16
PEACH	17
BURGUNDY	18
RED RED	19
SUPER RED	20
X-MAS RED	21
VIOLET	22
TULIP RED	23
HOLIDAY RED	24
TERRA COTTA	25
BRIGHT WHITE	26
FUCHSIA	27
TURQUOISE	28
AVOCADO	29
REGAL PURPLE	30
WARM BROWN	31
SOFT PINK	32
MAROON	33
NAVY BLUE	34
GOLD	35
ELECTRIC BLUE	60
ELECTRIC YELLOW	61
ELECTRIC GREEN	62
ELECTRIC ORANGE	63
ELECTRIC PINK	64
ELECTRIC PURPLE	65
GOLD	70*
SILVER	71*
PEARL	72*
COPPER	73*
BRONZE	74*
BLUE	75*
GREEN	76*
YELLOW	77*
ORANGE	78*
PINK	79*
RED	80*
LAVENDER	81*

* AVAILABLE IN SHEEN AIRBRUSH ONLY



12 PACK OF GEL FOOD COLOR

No. 1112 / UPC 0 14963 01112 6
One each of the following .75 oz. certified gel colors: black, blue, yellow, green, pink, red, teal, orange, fuchsia, violet, sky blue, and brown.

Pack	Ctn. Wt.	Cu. Ft.	Master
12	9.2 Lbs.	.28	72

6 PACK OF GEL FOOD COLOR

No. 1106 / UPC 0 14963 01106 5
One each of the following .75 oz. certified gel colors: black, blue, yellow, green, pink, and red.

Pack	Ctn. Wt.	Cu. Ft.	Master
12	5.0 Lbs.	.27	72



FOOD COLOR MARKERS

No. 1110 / UPC 0 14963 01110 2
Write on and decorate fondant, royal icing or other foods.
Made with U.S. Certified Food Colors. 10 Markers

Pack	Ctn. Wt.	Cu. Ft.
10	2.2 Lbs.	.12



MERINGUE POWDER

Use to make royal icing, butter cream icing, and meringue topping.

No.	UPC	Size	Pack	Ctn. Wt.	Cu. Ft.
470	0 14963 00470 0	5 oz	12	05.2 Lbs.	0.42
475	0 14963 00475 3	10 oz	12	09.2 Lbs.	0.55
480	0 14963 00480 0	20 oz	12	17.6 Lbs.	1.0
481	0 14963 00481 4	10 Lbs.	1	10.4 Lbs.	0.55



FONDANT MIX

No. 482 / UPC 0 14963 00482 1
Use to make poured fondant icing for petit fours, candy and other desserts.
16 oz.

Pack	Ctn. Wt.	Cu. Ft.
12	14.6 Lbs.	1.0



PIPING GEL

Use to write greetings and make decorations on cakes.
Add gel color and its ready to use.

No.	UPC	Size	Pack	Ctn. Wt.	Cu. Ft.
410	0 14963 00410 0	10 oz	12	09.0 Lbs.	0.42
415	0 14963 00415 5	5 lbs.	6	34.6 Lbs.	1.3



Satin Ice rolled fondant produces a satin-smooth elegant finish to any cake. Our patented formula and mixing process produces a smooth, creamy product with a luscious, mellow taste that is unmatched. Preferred for its ease of use and ability to be rolled super thin, Satin Ice is used to cover and decorate wedding and special occasion cakes, custom novelty cakes, cup cakes and cookies. Also perfect for modeling character figures, bows, drapes and swags. This ideal cake covering seals the cake, keeps it moist and allows for an extended shelf life. 0g trans fats, 0mg cholesterol. Allergen information: Gluten free, dairy free, nut free. Contains no animal derived products (vegan). Certified kosher pareve.

**Sugar Art Institute
Ephrata, PA 17522**



**Sugar Art Institute
Ephrata, PA 17522**

**Great Cakes
Brighton, MI 48116**



Made in USA Since 2001



Satin Ice is now in consumer friendly boxes. The new packages are attractive, informative and fit neatly on a shelf.

Size	Pack	Ctn.Wt.	Cu. Ft.
1.5 Lbs.	12	18.2 Lbs.	.37
5 Lbs.	6	30.2 Lbs.	.52

Color / Flavor	Size	No.	UPC
White/Vanilla	1.5 Lbs.	S10027	1 83736 00027 5
	5 Lbs.	S10069	1 83736 00069 5
	20 Lbs.	S10002	1 83736 00000 2
Ivory/Vanilla	1.5 Lbs.	S10028	1 83736 00028 2
	5 Lbs.	S10070	1 83736 00070 1
Dark/Chocolate	1.5 Lbs.	S10029	1 83736 00029 9
	5 Lbs.	S10071	1 83736 00071 8
White/Buttercream	1.5 Lbs.	S10040	8 56801 00240 4
	5 Lbs.	S10070	1 83736 00070 1
Black/Vanilla	1.5 Lbs.	S10035	1 83736 00035 0
	5 Lbs.	S10770	1 83736 00077 0
Red/Vanilla	1.5 Lbs.	S10031	1 83736 00031 2
	5 Lbs.	S10073	1 83736 00073 2
Blue/Vanilla	1.5 Lbs.	S10034	1 83736 00034 3
	5 Lbs.	S10076	1 83736 00076 3
Green/Vanilla	1.5 Lbs.	S10033	1 83736 00033 6
	5 Lbs.	S10075	1 83736 00075 6
Yellow/Vanilla	1.5 Lbs.	S10032	1 83736 00032 9
	5 Lbs.	S10074	1 83736 00074 9
Pink/Vanilla	1.5 Lbs.	S10036	1 83736 00036 7
	5 Lbs.	S10070	1 83736 00070 1
Purple/Vanilla	1.5 Lbs.	S10037	1 83736 00037 4
	5 Lbs.	S10079	1 83736 00079 4
Orange/Vanilla	1.5 Lbs.	S10237	8 56801 00237 4
	5 Lbs.		
Pastel Green/Vanilla	1.5 Lbs.	S10236	8 56801 00236 7
	5 Lbs.		
Pastel Yellow/Vanilla	1.5 Lbs.	S10039	8 56801 00239 8
	5 Lbs.		
Baby Pink/Vanilla	1.5 Lbs.	S12343	8 56801 00234 3
	5 Lbs.		
Baby Blue/Vanilla	1.5 Lbs.	S12350	8 56801 00235 0
	5 Lbs.		
Lavender/Vanilla	1.5 Lbs.	S10038	8 56801 00238 1
	5 Lbs.		
Gum Paste	1.5 Lbs.	S10030	1 83736 00003 0
	5 Lbs.		



Adjustable Cutters	48	Lady Lock Forms	27
Airbrush Color	60	Lady Mary Cake Boards	58
Americolor	60	Lattice Dough Cutter	53
Baking Cups	59	Meringue Powder	61
Ball Tool	21	Molds	24, 25, 26, 27
Bear Claw	53	Multi Wheel Cutters	48
Bench Scrapers	47	Non Slip Pads	9, 22
Bowl Scrapers	52	Pan Liner	54
Brushes	56, 57	Pans	54
Cake Boards	58, 59	Paper Cups	59
Cake Knives	47	Parchment Triangles	18
Cake Markers	53	Pastry Bags	16, 17
Cake Stands	9	Pastry Brushes	56, 57
Cake Tester	50	Pastry Cloths	22
Cannoli Forms	27	Pastry Scraper	44
Chocolate Shaver	47	Pastry Wheels	49
Cookie Cutters	28-42	Pie Crimper	47
Cookie Spatula	46	Pie Spatula	46
Couplers	14	Pinwheel Cutter	42
Cream Roll Forms	27	Pizza Cutters	49
Crimper Set	4	Plastic Rolling Pins	21
Croissant Cutter	49	Plunger Cutters	38, 39, 40, 41
Cutters	28-41, 51	Rolled Fondant Icing	62, 63
Decorating Bags	16, 17	Rolling Pin Sleeves	20
Decorating Bag Stand	18	Rolling Pins	20, 21
Decorating Combs	50	Satin Ice	62, 63
Decorating Sets	3, 4	Sculpturing Tool Set	5
Decorating Turntables	9	Shakers	51
Dipping Tools Sets	5	Silicone Work Mats	22
Disposable Bag Dispenser	17	Spatulas	44, 45, 46
Disposable Bags	17	Spiral Stamp	42
Dough Docker	53	Spray Colors	60
Doughnut Sticks	36	Striper Bag Insert	17
Flower Nails	12	Syringe	18
Fluted Pastry Wheels	49	Syringe Sets	4
Fondant Strip Applicator	5	Terrine Molds	26
Fondant Smoothers	50, 52	Tube Storage Boxes	13, 14
Fondant Work Mats	22	Tubes	10, 11, 12, 13
Food Color	60, 61	Tips	10, 11, 12, 13
Forms	25	Tubes Sets	6, 7
French Rolling Pin	21	Tweezers	47
Gel Color	60	Wafer Leaf Stencils	51
Kaiser Stamp	42	Waffle Stamp	42
Labeling Spears	50		

Please refer to the price list for a numeric sorting of our items.

Ateco



Mike Terry
Indianapolis, IN 46229

August Thomsen Corp.
36 Sea Cliff Avenue
Glen Cove, NY 11542, USA
Tel: 800-645-7170
Outside U.S. and Canada: 516-676-7100
Fax: 516-676-7108
www.atecousa.com