



## Commercial Dishwashers

---

### Single Tank Rack Conveyor R-1ER/R-1SR



**IDEAL FOR:** Medium hotels, guest houses, chain-restaurants and dining halls

#### **Characteristics and Advantages:**

- ✧ AISI304 stainless steel
- ✧ Stainless steel wash pump, durable and powerful, ensure better washing effects
- ✧ Unique design of inward curving nozzles, super washing ability
- ✧ Wash arms and rinse arms are easy to remove and clean, without any supporting tools
- ✧ Double sprinkler design creates greater washing effect, water and electricity saving
- ✧ The safety protection device can automatically stop the machine when nobody takes care of dishes
- ✧ Intellectual control system, International-Brand temperature control switch with CE certification and the U.S. regulatory circular temperature indicator
- ✧ The booster is equipped with limit protection thermostats to avoid burns resulted from overheated booster



## Commercial Dishwashers

### Technical Data:

Name/Model	R-1ER	R-1SR
Heating	Electricity	Electricity
Appearance dimension(mm)	1748×706×1713	1748×706×1713
Passing width(mm)	510	510
Max clear entry height(mm)	450	450
Max capacity(liter)	203	203
Water consumption(liter/rack)	2.07	2.07
Wash tank capacity(liter)	90	90
Booster capacity(liter)	25	25
Wash temperature(°C)	60~65	60~65
Rinse temperature(°C)	82~90	82~90
Diameter of water inlet hose(in)	3/4	3/4
Diameter of drainpipe(in)	2	2
Incoming water pressure(Kg/cm <sup>2</sup> )	1-6	1-6
Incoming water hardness(g/l)	0.034-0.103	0.034-0.103

### Optional Configuration:

Power Requirements	380V/50HZ/3P	380V/50HZ/3P	380V/50HZ/3P
Heating	Electricity	Electricity	Steam
Incoming water temperature(°C)	10—60	40—60	10—60
Tank heater(KW)	7.5	7.5	-
Booster heater(KW)	9×4	9×2	-
Total steam consumption(Kg/h)	-	-	75
Wash pump(KW)	1.5	1.5	1.5
Rinse pump(KW)	0.25	0.25	0.25
Total connected load(KW)	46	28	3
Total amps required(A)	70	43	5
Cross section of cable(mm <sup>2</sup> )	16	10	2.5
Rated current of air circuit breaker(A)	100	63	16



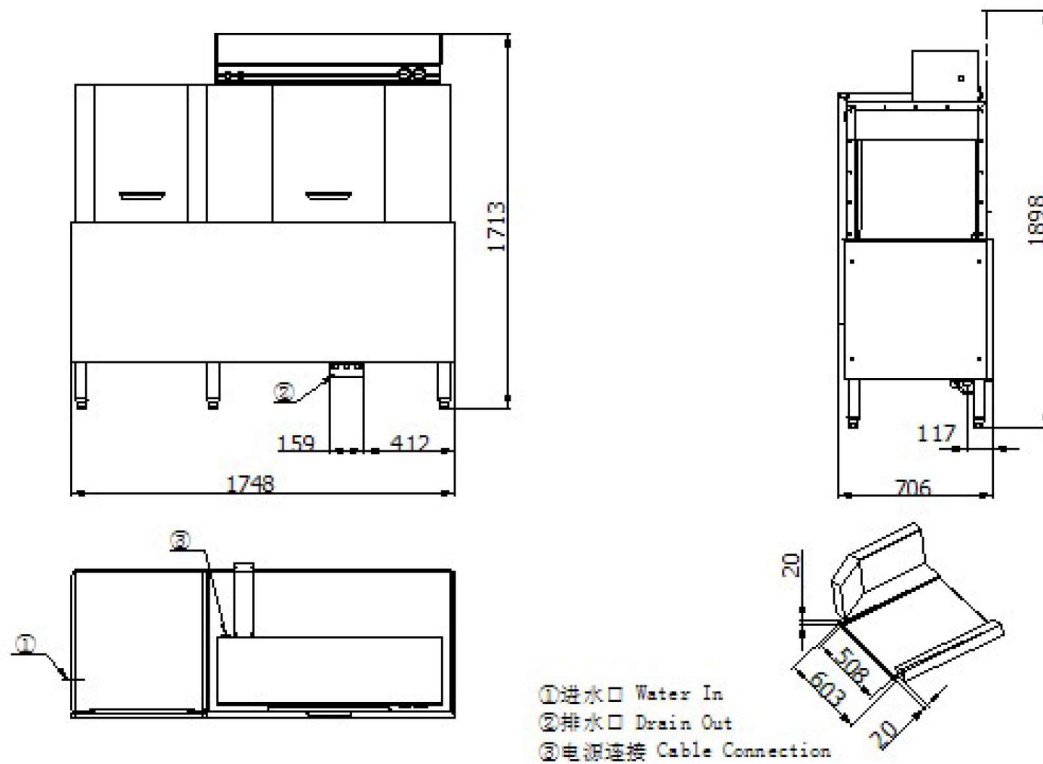
## Commercial Dishwashers

### Installation and Connection Requirements:

Power Requirements: 380V/50Hz/3Ph+Neutral +Ground, with an external separate air circuit breaker

Machine can be directly connected to water supply system, the lowest incoming water pressure should be 1Kg/ cm<sup>2</sup>

If a hood or vent needed, the inlet capacity should be 5.7m<sup>3</sup>/min and the outlet 11.3m<sup>3</sup>/min



Dishwasher with your logo or design